

TIECO INTERNATIONAL



TIECO INTERNATIONAL
Catalogue Ver:50-01

PHONE 03 9757 4900

www.tieco.com.au
sales@tieco.com.au





Tieco International(Aust.) Pty. Ltd.

ABN 76 145 648 345 Effective Date 1st. July 2018

Tieco - Transport & Industrial Equipment Co.

Pty Ltd formed in July 1967 and commenced commercial operations on 1st. December 1967, as an importer and distributor of American made heavy duty truck filters and accessories.

Tieco continued to expand and in June 1980 the company was restructured to become Tieco International (Aust) Pty Ltd. In July 1992, Tieco took over an exhaust pipe manufacturer and commenced manufacturing exhaust pipes and accessories in September that year .

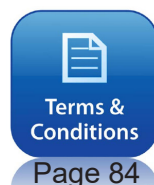
At all times the company has specialised in the heavy duty truck market where it is a significant supplier (80% of OEMs) to the truck manufacturers and to the spare parts network throughout Australia. Tieco is a major supplier to the OEMs for their exhaust and air inlet and coolant pipes.

For over fifty one years the company has consistently aimed to supply the best product in each category of its sales range, whether by importing or design and manufacturing inhouse. Tieco was the first Australian company in its industry group to achieve the ISO 9001 quality certification, which it maintains currently, adding ISO 14001 in 2008.

1967



Present Day



DISCLAIMER

The products supplied by the Tieco Group ("Products") are manufactured according to strict specifications. However, given that some products or materials used in manufacture are imported or may become unavailable from time to time, then it may be necessary to substitute on occasions. In that event, Tieco Group will endeavour to make the changes seamlessly and in a manner that will not affect performance or appearance. However, this may not always be possible. The purchaser of the Products accepts that these changes or substitutions will occur from time to time and are beyond Tieco's control.

Contents

	Page Number	Section
Air Horns		
Grover Air Horns	68	9
Tieco Air Horns & Accessories	69	
Air Intake Hoses		
Mission Rubber EPDM Air Intake Rubber	4	1
Air Rams		
Air Intake Air Rams / Air Cleaners	66	8
Cab Accessories		
Tieco Mirrors / Cab Fans	78	12
Tieco Cab Lights	79	
Tieco Drain Valves	80	
Tieco Hub Caps / Nut Covers	81	
Multi Purpose Tie Downs	82	
Clamps		
Breeze Hi-Torque Clamps	30	3
XSV Liner Clamps	33	
Orbit Heavy Duty Clamps	34	
RG Ray T-Bolt Clamps	40	
TORCA Clamps	44	
Tieco Exhaust Clamps	47	
Exhaust Components		
Exhaust Tube / Exhaust Flex / Donuts	50	5
Exhaust Couplings / Flanges	52	
Mandrel Exhaust Bends	54	
Exhaust Stacks		
Chrome Exhaust Stacks	60	7
Gauges		
Isspro Gauges Pryrometers / ENM Hourmeters	71	10
Murphy Gauges	73	
Speed Limiter Kits	72	
Mufflers		
Mufflers & Guards	58	6
Pacbrake		
Pacbrake Exhaust Brakes / Pacbrake On Board Air	75	11
Rain Caps		
Chrome, Zinc Stainless Steel.....	49	4
Silicone Hose		
Purosil Silicone Coolant - Turbo - CAC Hoses	8	2
Purosil Marine Silicone	18	

MISSION EPDM 90 Degree Rubber Elbows



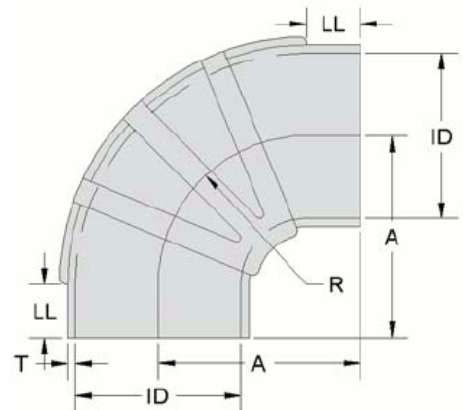
Features & Benefits

- Specifically formulated EPDM compound.
- Available in nitrile and chloroprene and silicone compounds.
- Vacuum collapse rating exceeds 4" Hg. mercury.
- Recommended for temperatures: -60°F to +300°F duty.
- Complies with physical properties requirements of ASTM D2000 3BA715A14B13C12F17. 70 ±5 Shore A Hardness
- 1500 PSI Tensile, minimum. 250% Elongation, minimum.
- Air Age, 70 Hrs. at 100° C. Durometer Change, +10, maximum.
- Tensile Change, -25%, maximum.
- Elongation Change, -25%, maximum.
- Comp. Set, Method B, at 70° C. 25% maximum.
- Ozone Resistance, D1171, Method B, Quality Retention Rating: 100%
- Low Temp. Brittleness, D2137, Method A. Non Brittle after 3 Minutes at -40° C.



MISSION EPDM 90° Rubber Elbows

Part #	ID	A	LL	R	T
RL290	2	3.5	1.5	2	0.2
RL2590	2.5	4	1.5	2.5	0.25
RL390	3	5.25	1.5	3.75	0.25
RL3590	3.5	5.5	2	3.5	0.25
RL490	4	5.75	1.25	4.5	0.25
RL4590	4.5	5.5	2	3.5	0.25
RL590	5	6.12	1.62	4.5	0.25
RL5590	5.5	6.5	1.75	4.75	0.25
RL690	6	6.75	1.75	5	0.25
RL690SR	6	5	1.62	3.5	0.25
RL790	7	7.44	2	5.56	0.31
RL890	8	8.5	2	6.5	0.37
RL1090	10	10.5	2	8.5	0.37



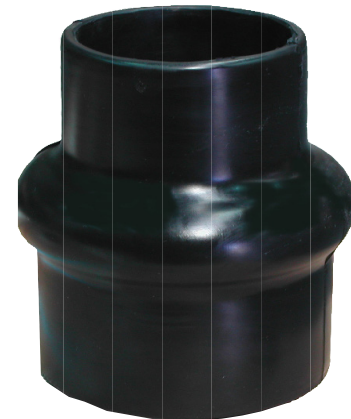
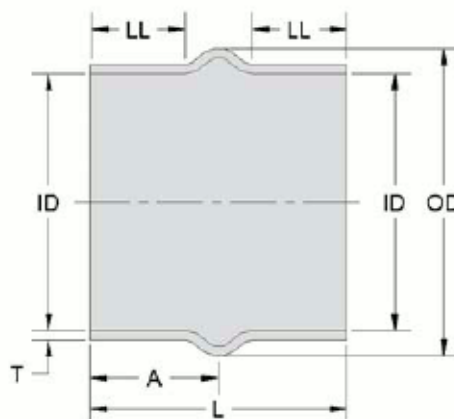
MISSION EPDM 90° Reducing Rubber Elbows

Part #	ID1	ID2	A	B	LL1	LL2	R	T
RL5490	5	4	5.75	6	1.75	1.75	3.75	0.25
RL6590	6	5	7	6	1.75	1.75	4.25	0.25
RL6590SR	6	5	4.75	4.75	1.25	1.75	3.5	0.25
RL65590SR	6	5.5	5	5	1.38	1.63	3.5	0.25
RL65590	6	5.5	6.7	6.7	1.5	1.75	5	0.25
RL7590	7	5	7	6.25	2.74	1.75	4.25	0.25
RL75590	7	5.5	5.75	6.25	1.5	1.5	3.68	0.31
RL7690	7	6	7.5	8.88	3	4.5	4.38	0.38



MISSION EPDM Hump Hose Reducers

Part #	ID1	ID2	L	A	LL1	LL2	OD	T
HHR325	3	2.5	4.5	2.25	1.6	1.51	4.25	0.25
HHR353	3.5	3	5	2.50	1.79	1.75	5.00	.25
HHR43	4	3	5.25	2.63	1.94	1.88	5.38	0.25
HHR435	4	3.5	5.25	2.63	1.94	1.88	5.38	0.25
HHR54	5	4	6	3	2.13	1.81	6.25	0.25
HHR554	5.5	4	6	3	2.13	1.88	7	0.25
HHR555	5.5	5	6	3	2.13	1.88	7	0.25
HHR65	6	5	6	3	2.13	1.88	7.5	0.25
HHR655	6	5.5	6	3	2.13	1.88	7.5	0.25
HHR75	7	5	7	3.5	2.5	2.28	8.5	0.25
HHR755	7	5.5	7	3.5	2.5	2.28	8.5	0.25
HHR76	7	6	6	2.75	2.25	1.53	8.5	0.25
HHR855	8	5.5	7.05	3.5	2.5	2.25	9.6	0.25
HHR86	8	6	6	3	2	1.75	9.6	0.25
HHR87	8	7	6	3	2	1.78	9.5	0.25



1

MISSION EPDM Hump Hoses

Part #	ID	L	A	LL	OD	T
HH25	2.5	3.5	1.75	1.1	3.65	0.2
HH3	3	5.25	2.62	1.87	4.5	0.25
HH35	3.5	5.25	2.62	1.92	5	0.25
HH4	4	5.25	2.63	2	5.25	0.25
HH45	4.5	6	3	2.32	5.88	0.25
HH5	5	6	3	2.25	6.1	0.25
HH55	5.5	6	3	2.13	7	0.25
HH6S	6	6	3	2.25	7.38	0.25
HH6	6	7	3.5	2.58	7.38	0.25
HH7	7	7	3.5	2.58	8.3	0.25
HH8	8	8	4	2.86	10	0.28
HH10	10	6	3	1.67	12.2	0.25



SALES DIRECT: 03 97 57 4949 sales@tieco.com.au

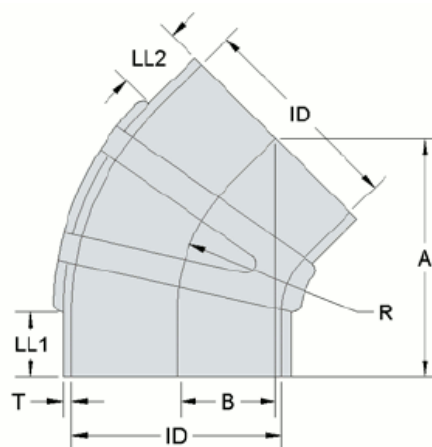
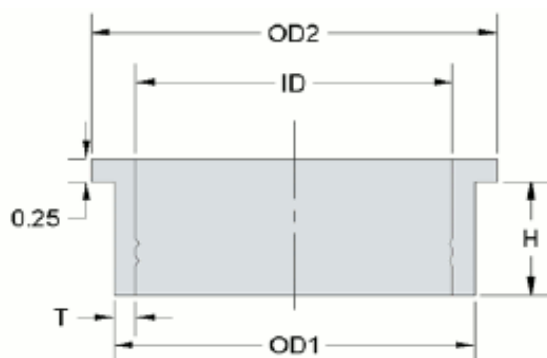
Ver: 50-01



Page 5

MISSION EPDM 45 Degree Rubber Elbows

Part #	ID	A	B	LL1	LL2	R	T
RL245	2	4	1.65	1.52	1.51	2	0.2
RL2545	2.5	4.31	1.79	1.5	1.48	2.5	0.2
RL345	3	5.5	2.28	1.6	1.6	3.75	0.25
RL3545	3.5	5	1.88	1.68	1.2	3.5	0.25
RL445	4	5.5	2.34	1.46	1.46	4.25	0.25
RL4545	4.5	5.03	2.08	1.5	1.5	3.5	0.25
RL545	5	5.5	2.28	1.36	1.36	4.5	0.25
RL5545	5.5	6.25	2.6	1.7	1.7	4.75	0.25
RL645	6	6.5	2.69	1.74	1.74	5	0.25
RL745	7	8	3.31	2.34	2.34	5.56	0.31
RL845	8	8.06	3.34	2.03	2.03	6.5	0.37
RL1045	10	10.5	4.35	2.63	2.63	8.5	0.37



MISSION EPDM Inserts

Part #	ID	OD1	OD2	H	T
7-4375	3.75	4	4.5	1.5	0.13
7-4524	4	4.5	5	1.5	0.25
7-524	4	5	5.5	1.5	0.5
7-5245	4.5	5	5.5	1.5	0.25
7-5524	4	5.5	6	1.5	0.75
7-5525	5	5.5	6	1.5	0.25
7-625	5	6	6.5	1.5	0.5
7-6255	5.5	6	6.5	1.5	0.25
7-726	6	7	7.5	1.5	0.5
7-827	7	8	8.5	1.5	0.5



All Mission EPDM products are designed to meet unique transition requirements in air intake systems that require articulation or vibration isolation.

MISSION EPDM Straight Rubber Joiners

Part #	ID	OD	L	T
S200X250	2.00	2.50	2.50	0.19
S200X900	2.00	2.38	9.00	0.19
S300X300	3.00	3.38	3.00	0.19
S400X350	4.00	4.50	3.50	0.25
S400X510	4.00	4.50	5.10	0.25
S500X350	5.00	5.50	3.50	0.25
S550X400	5.50	6.00	4.00	0.25
S600X350	6.00	6.50	3.50	0.25
S700X350	7.00	7.50	3.50	0.25
S800X350	8.00	8.50	3.50	0.25
S900X350	9.00	9.50	3.50	0.25



EPDM Clamp Guide

Clamp Part #	Diameter Ranges		Mission EPDM Series Hose
Z8-30	3.31" (84.0)	3.59" (91.1)	3" ID Hoses
Z8-35	3.81" (96.7)	4.09" (103.8)	3.5" ID Hoses
Z8-40	4.31" (109.4)	4.59" (116.5)	4" ID Hoses
Z8-45	4.81" (122.1)	5.09" (129.2)	4.5" ID Hoses
Z8-50	5.31" (134.8)	5.59" (141.9)	5" ID Hoses
Z8-55	5.94" (150.8)	6.21" (157.7)	5.5" ID Hoses
Z8-60	6.38" (162.0)	6.65" (168.9)	6" ID Hoses
Z8-70	7.38" (187.4)	7.78" (197.6)	7" ID Hoses
Z8-80	8.25" (209.5)	8.56" (217.4)	8" ID Hoses
Z8-100	10.50" (266.7)	10.91" (277.1)	10" ID Hoses

*See Page 40 for Full Z Series Clamp Range



Recommended Maximum Torque

Metric (mm) Imperial (UNF)

6	¼	10Nm
8	5/16	20Nm
10	3/8	27Nm
12	½	42Nm

PUROSIL Silicone Coolant Hose 4-Ply

Part #	Hose ID		Hose OD		Burst Strength	
	inches	mm	inches	mm	psi*	TMC
70-025	0.25	6.35	0.62	15.8	477	125
70-031	0.31	7.95	0.69	17.4	477	125
70-038	0.38	9.65	0.75	19.1	477	125
70-050	0.5	12.7	0.87	22.15	425	125
70-062	0.62	15.75	0.99	25.2	374	125
70-075	0.75	19.05	1.12	28.5	323	125
70-087	0.88	22.35	1.25	31.8	297	125
70-100	1	25.4	1.37	34.85	297	125
70-106	1.06	27	1.44	36.45	297	125
70-112	1.13	28.58	1.5	38.02	297	125
70-125	1.25	31.75	1.62	41.2	274	125
70-131	1.31	33.35	1.69	42.8	274	125
70-138	1.38	35.05	1.75	44.5	274	125
70-150	1.5	38.1	1.87	47.55	248	125
70-162	1.62	41.15	1.99	50.6	248	125
70-175	1.75	44.45	2.12	53.9	224	125
70-187	1.88	47.75	2.25	57.2	199	100
70-200	2	50.8	2.37	60.25	199	100
70-212	2.13	53.98	2.5	63.42	175	100
70-225	2.25	57.15	2.62	66.6	175	100
70-238	2.38	60.45	2.75	69.9	175	100
70-250	2.5	63.5	2.87	72.95	149	100
70-262	2.62	66.55	2.99	76	124	100
70-275	2.75	69.85	3.12	79.3	124	100
70-287	2.88	73.03	3.25	82.47	87	100
70-300	3	76.2	3.37	85.65	87	100
70-312	3.13	79.38	3.5	88.82	75	100
70-325	3.25	82.55	3.62	92	75	100
70-338	3.38	85.73	3.75	95.17	75	100
70-350	3.5	88.9	3.87	98.35	75	100
70-362	3.63	92.08	4	101.52	49	100
70-375	3.75	95.25	4.12	104.7	49	100
70-400	4	101.6	4.37	111.05	49	100
70-450	4.5	114.3	4.87	123.75	n/a	100
70-500	5	127	5.37	136.45	n/a	n/a
70-550	5.5	139.7	5.87	149.15	n/a	n/a
70-600	6	152.4	6.37	161.85	n/a	n/a

For heavy duty pressure connections in hostile engine environments. Ideal for extreme temperatures and various pressure ranges where high performance levels are required.

Temperatures: -65° to 350°F (-53.9°C to +176.6°C).

Resistant to electrochemical degradation.

Meets and exceeds all performance and physical characteristics of SAE J20 R1, SAE J20 R1 H.T. Class A, TMC RP303B Grade I and Grade II, Mil Spec A-A-52426 and various heavy-duty OEM requirements.

UV and ozone resistant.

Longer service life than 3 ply.





PUROSIL Silicone Turbo Hose 4-Ply

Part #	Hose ID		Hose OD		Burst Strength	
	inches	mm	inches	mm	psi*	TMC
670-075	0.75	19.05	1.07	27.18	323	125
670-100	1.13	25.4	1.32	33.53	297	125
670-125	1.25	31.75	1.57	39.88	274	125
670-150	1.5	38.1	1.82	46.23	248	125
670-175	1.75	44.45	2.07	52.58	224	125
670-187	1.88	47.75	2.2	55.88	199	100
670-200	2	50.8	2.32	58.93	175	100
670-212	2.13	53.98	2.45	62.1	175	100
670-225	2.25	57.15	2.57	65.28	175	100
670-238	2.38	60.45	2.7	68.58	149	100
670-250	2.5	63.5	2.82	71.63	124	100
670-262	2.62	66.55	2.94	74.68	124	100
670-275	2.75	69.85	3.07	77.98	87	100
670-300	3	76.2	3.32	84.33	75	100
670-325	3.25	82.55	3.57	90.68	75	100
670-340	3.31	84.1	3.63	92.23	75	100
670-338	3.38	85.73	3.7	93.85	49	100
670-350	3.5	88.9	3.82	97.03	49	100
670-375	3.75	95.25	4.07	103.38	49	100
670-400	4	101.6	4.32	109.73	n/a	100
670-450	4.5	114.3	4.82	122.43	n/a	100
670-500	5	127	5.32	135.13	n/a	n/a
670-600	6	152.4	6.32	160.53	n/a	n/a

For heavy duty pressure connections in hostile engine environments. Ideal for extreme temperatures and various pressure ranges where high performance levels are required.



2

Recommended for temperatures: -65° to 350°F (-53.9°C to +176.6°C).

Resistant to electrochemical degradation.

Meets and exceeds all performance and physical characteristics of SAE J20 R1, SAE J20 R1 H.T. Class A, TMC RP303B Grade I and Grade II, Mil Spec A-A-52426 and various heavy-duty OEM requirements.

UV and ozone resistant. Longer service life than 3 ply.

*** WORKING PRESSURE (WP) AND BURST PRESSURE (BP):** WP is the maximum pressure the hose should see while in service, including brief pressure spikes or surges. A hose's published burst pressure is the value at which a brand new piece of hose will fail at during a one time pressure test. Hose manufacturers give hoses working pressures and burst pressure. These are typically at a 4:1 ratio (not safety factor) to each other. When choosing a hose for a system, select a hose that is rated at or above the maximum pressure that can occur in the system.



SALES DIRECT: 03 97 57 4949 sales@tieco.com.au

Ver: 50-01



Page 9



PUROSIL Silicone Heater Hose Series 80

For heavy duty pressure connections in hostile engine environments. Ideal for extreme temperature and various pressure ranges where high performance levels are required.

Features & Benefits

- Single-braided polyester reinforcement.
- High burst strength and excellent heat resistance.
- Recommended for temperatures: -65° to +350°F (-53.9°C to +176.6°C).
- Resistant to coolants, cold leaks, cracking, peeling, aging and ozone.
- Meets and exceeds all performance and physical characteristics of SAE J20 R3, Class A.

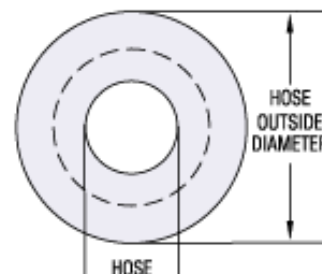


Part # per Foot	Part # per 25 ft Roll	Part # per 50 ft Roll	Hose ID		Hose Wall		Hose OD		Burst (PSI)	SAE
			in	mm	in	mm	in	mm		
80-025	80-025-25	80-025-50	0.25	6.35	0.138	3.51	0.53	13.36	350	250
80-031	80-031-25	80-031-50	0.313	7.94	0.138	3.51	0.59	14.95	420	250
80-038	80-038-25	80-038-50	0.375	9.53	0.157	3.99	0.69	17.5	482	250
80-050	80-050-25	80-050-50	0.5	12.7	0.157	3.99	0.81	20.68	422	250
80-062	80-062-25	80-062-50	0.625	15.88	0.157	3.99	0.94	23.85	300	250
80-075	80-075-25	80-075-50	0.75	19.05	0.157	3.99	1.06	27.03	275	250
80-088	80-088-25	80-088-50	0.875	22.23	0.157	3.99	1.19	30.2	275	250
80-100	80-100-25	80-100-50	1	25.4	0.169	4.29	1.34	33.99	200	250

Also available on Spools:



Part #	Spool Size
80-025-650	650 ft
80-031-550	550ft
80-038-550	550 ft
80-050-500	500ft
80-062-450	450 ft
80-075-250	250ft
80-088-200	200 ft
80-100-150	150ft



Volume Discounts
apply on Spools
Call us for best price



We're proud to
offer products
that are

MADE in AMERICA



PUROSIL Silicone Charge Air Hot Side Connectors

Designed and engineered to provide a connection between engine mounted charge air system components. Ideal for handling slight misalignments and isolating vibration between hose ends.

Features & Benefits

- 4 ply silicone aramid reinforced configuration.
- Convolutions increase flexibility in high vibration situations.
- 316 Stainless Steel retaining rings reduce swell and increase hose life.
- Recommended for temperatures: -65° to 500°F (-53.9°C to 260°C).
- Fluorocarbon liner available for increased petrochemical combustion residue resistance.
- Combines high performance and economy. UV and ozone resistant.

Part #	Hose ID		Hose OD		Length	Clamps
	inches	mm	inches	mm	inches	To Suit
367-250-060	2.5	63.5	2.71	69.09	6	848-42
367-300-060	3	76.2	3.22	81.79	6	848-50
367-350-060	3.5	88.9	3.72	94.49	6	848-58
367-400-060	4	101.6	4.22	107.19	6	848-66
367-400-070	4	101.6	4.22	107.19	7	848-66
367-400-075	4	101.6	4.22	107.19	7.5	848-66
367-400-080	4	101.6	4.22	107.19	8	848-66
367-400-010	4	101.6	4.22	107.19	10	848-66
367-450-060	4.5	114.3	4.71	119.99	6	848-74
367-500-070	5	127	5.22	132.59	7	848-82
367-500-080	5	127	5.22	132.59	8	848-82
66-400-1	4	101.6	4.22	107.19	9.5	848-66
Transition CAC Hoses						848 SERIES
367-300/350-060	3.00 to 3.50 Inch transition				6	50 & 58
367-300/400-060	3.00 to 4.00 Inch transition				6	50 & 66
367-350/400-060	3.50 to 4.00 Inch transition				6	58 & 66
367-350/400-070	3.50 to 4.00 Inch transition				7	58 & 66
367-400/450-060	4.00 to 4.50 Inch transition				6	66 & 74



2

PUROSIL Fluorocarbon Charge Air Hot Side Connectors

Part #	Hose ID		Hose OD		Length
	inches	mm	inches	mm	inches
367FC-400-060	4	101.6	4.22	107.19	4
367FC-500-060	5	127	5.22	132.59	4
367FC-500-070	5	127	5.22	132.59	4



SALES DIRECT: 03 97 57 4949 sales@tieco.com.au

Ver: 50-01



Page 11

PUROSIL Silicone Turbo Joiners

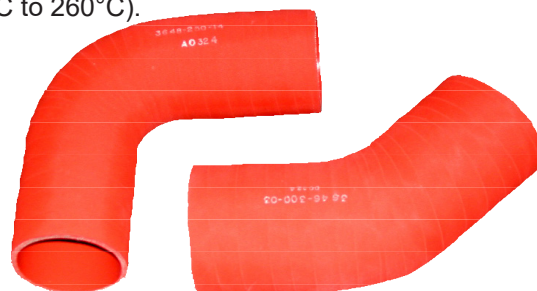
Part #	Description	Manuf. Ref.
7001068	62-350 X 3"	5162888 (D.D.)
7001092	670-340 X 3.55"	202994 (CUM.)
7001093	62-250 X 3"	5144041 (D.D.)
7001094	62-450 X 3"	5100014 (D.D.)
7001095	670-200 X 3.25"	952979-3 (VOL.)
7001096	62-300 X 3"	952986-8 (VOL.)
T202994	62-338 X 3.55"	202994 (CUM.)



PUROSIL Silicone Aramid Turbo Elbows

Features & Benefits

- 4 ply silicone aramid reinforced configuration.
- Economical for a wide variety of turbocharger applications.
- Designed and engineered for a wide variety of high temperature turbocharger applications.
- Resistant to minor oil splash and petrochemical exposure.
- Recommended for temperatures: -65° to 500°F (-53.9°C to 260°C).
- Excellent flexibility.
- Fluorocarbon liner available for increased petrochemical combustion residue resistance.
- UV and ozone resistant.



Part #	Hose ID	Leg 1	Leg 2	Inside Radius	Wall Thickness
	inches	inches	inches	inches	inches
45° TURBO HOSE					
3646-300-03	3.0	6	6	4	0.16
3646-350-01	3.5	6	6	3.5	0.16
3646-400-01	4.0	3	3	4	0.16
90° TURBO HOSE					
3648-250-14	2.5	6	6	3.00	0.16
3648-300-06	3.0	6	6	3.00	0.16
3648-350-02	3.5	4	4	4.00	0.16
3648-400-03	4.0	5	5	4.00	0.19
3648-400-05	4.0	5.7	5.7	4.00	0.19
7001560	4.0	6	6	4.00	0.20

PUROSIL Silicone 3641 Series Hot Side

Feature & Benefits

- Aramid reinforced configuration for fatigue resistance at high temperatures.
- Recommended for temperatures: -65° to 500°F (-53.9°C to 260°C).
- Fluorocarbon liner available for increased petrochemical combustion residue resistance.
- Designed and engineered for a wide variety of high temperature turbocharger applications.
- Silicone is resistant to extreme temperature conditions.
- Resistant to minor oil splash and petrochemical exposure.
- Compensates for misalignment and offsets vibration.
- UV and ozone resistant.
- Long service life.
- 4 ply

Part #	Hose ID		Hose OD		Length		Ply
	inches	mm	inches	mm	Inches	mm	
3641-600-600	6.00"	152.4	6.32"	160.4	6"	152.4	4



2

PUROSIL Silicone 76 Series Coolant/Cold Side

Feature & Benefits

- Reinforced configuration for fatigue-resistance at high temperatures.
- Suitable for coolant and cold side turbocharger applications in heavy duty automotive and marine engines.
- Recommended for temperatures: -65°F to +350°F (-53.9°C to 176.6°C).
- Silicon provides excellent high and low temperature resistance.
- Compensates for misalignment and offsets vibration.
- UV and ozone resistant.
- Special silicone liner resists coolant.

Part #	Hose ID		Hose OD		Length		Ply
	inches	mm	inches	mm	Inches	mm	
763-200-5	2.00"	50.8	2.31"	58.8	5 1/8"	130	3
763-225-7	2.25"	57.1	2.64"	67.0	5 1/8"	130	3
763-238-7	2.38"	60.3	2.70	68.3	5 1/8"	130	3
763-250-7	2.50"	63.5	2.81	71.5	5 1/8"	130	3
76-200-5	2.00"	50.8	2.38	60.5	5 1/8"	130	4
76-200-6	2.00"	50.8	2.38	60.8	6"	152	4
76-250-7	2.5"	63.5	2.90	73.5	6"	152	4
76-250-10	2.5"	63.5	2.90	73.5	10"	254	4



PUROSIL Silicone Coolant Hose 3-Ply

Part #	Hose ID		Hose OD		Burst Strength	
	inches	mm	inches	mm	SAE J20R1	TMC
7030-062	0.62	15.75	0.95	24.13	374	125
7030-075	0.75	19.05	1.08	27.43	323	125
7030-100	1	25.4	1.33	33.78	297	125
7030-112	1.13	28.58	1.46	36.96	297	125
7030-125	1.25	31.75	1.58	40.13	274	125
7030-150	1.5	38.1	1.83	46.48	248	125
7030-175	1.75	44.45	2.08	52.83	224	125
7030-200	2	50.8	2.33	59.18	199	100
7030-225	2.25	57.15	2.58	65.53	175	100
7030-250	2.5	63.5	2.83	71.88	149	100
7030-275	2.75	69.85	3.08	78.23	124	100
7030-300	3	76.2	3.33	84.58	87	100
7030-350	3.5	88.9	3.83	97.28	75	100



PUROSIL Silicone Coolant Flex Hose

Feature Benefits

- Reinforced configuration for fatigue-resistance at high temperatures.
- Suitable for coolant and cold side turbocharger applications in heavy duty automotive
- Recommended for temperatures: -65°F to +350°F (-53.9°C to 176.6°C).
- Silicon provides excellent high and low temperature resistance
- Compensates for misalignment and offsets vibration

Part #	Hose ID		Hose OD		Length
	inches	mm	inches	mm	
99-125-31	1.25"	31.75	1.56	39.75	31"
99-138-31	1.38"	35.05	1.70	43.05	31"
99-238-24	2.38"	60.3	2.68	68.3	24"
99-300-31	3.00"	76.2	3.31	84.2	31"





PUROSIL Silicone 90° Elbows 4-Ply

Part #	Hose ID	Leg 1	Leg 2	Inside Radius	Wall Thickness
	inches	inches	inches	inches	inches
90-100-22	1	1	6	1.5	0.19
90-100-6X6	1	6	6	1.5	0.19
90-125-6X6	1.25	6	6	1.75	0.19
90-150-6X6	1.5	6	6	2	0.19
90-175-6X6	1.75	6	6	1.75	0.19
90-187-7	1.88	5	9.5	2	0.19
90-187-9	1.88	5	8	2	0.19
90-200-6X6	2	6	6	4	0.19
90-200-97	2	4	4.5	4	0.19
90-200-91	2	5	8	4	0.19
90-200-90	2	5	5.5	4	0.19
90-200-M2	2	6	9	4	0.19
90-225-6X6	2.25	6	6	2.25	0.19
90-238-6X6	2.38	6	6	2.38	0.19
90-250-6X6	2.5	6	6	2.5	0.19
90-275-6X6	2.75	6	6	3.5	0.19
90-275-17	2.75	5	12	3.5	0.19
90-300-6X6	3	6	6	3	0.19
90-400-6X6	4	6	6	4	0.19

Coolant elbows designed to meet high performance requirements specified in various industry standards.

Features & Benefits

- 4 ply silicone polyester reinforced configuration to provide strength and flexibility.
- Silicone liner creates barrier to isolate medium.
- Recommended for temperatures: -65° to +350°F (-53.9°C to +176.6°C).
- Custom ply configurations available to meet flexibility and burst requirements.
- UV and ozone resistant.
- Meets and exceeds all performance and physical characteristics of SAE J20 R1, SAE J20 R1 H.T. Class A, TMC RP303B Grade I and Grade II, Mil Spec A-A-52426 and various heavy-duty OEM requirements.

2



PUROSIL Silicone 90° Reducing Elbows 4-Ply

Part #	Hose ID	Hose ID	Leg 1	Leg 2	Inside Radius	Wall Thickness
	inches	Inches	inches	inches	inches	inches
9049-187/200-01	1.87	2	3	3	2	0.19
9049-200/238-2	2	2.38	3	3	2	0.19
9044-200/250-MK	2	2.5	4	4	2	0.19



SALES DIRECT: 03 97 57 4949 sales@tieco.com.au

Ver: 50-01



Page 15

PUROSIL Silicone 45° Elbows 4-Ply

Part #	Hose ID	Leg 1	Leg 2	Inside Radius	Wall Thickness
	inches	inches	inches	inches	inches
9046-100-6X6	1	6	6	1.5	0.19
9046-125-6X6	1.25	6	6	1.75	0.19
9046-150-6X6	1.5	6	6	2	0.19
9046-175-6X6	1.75	6	6	1.75	0.19
9045-175-02	1.75	5.25	5.25	1.75	0.19
9046-200-6X6	2	6	6	2	0.19
90-200-92	2	3	3.5	2	0.19
9046-225-6X6	2.25	6	6	2.25	0.19
9046-250-6X6	2.5	6	6	2.5	0.19
9036-250-01	2.5	1	1	2.5	0.19
9046-250-06	2.5	x	x	x	0.19
9046-275-6X6	2.75	6	6	2.75	0.19
9046-300-6X6	3	6	6	3	0.19

Coolant elbows designed to meet high performance requirements specified in various industry standards.

Features & Benefits

- 4 ply silicone polyester reinforced configuration to provide strength and flexibility.
- Silicone liner creates barrier to isolate medium.
- Recommended for temperatures: -65° to +350°F (-53.9°C to +176.6°C).
- Custom ply configurations available to meet flexibility and burst requirements.
- UV and ozone resistant.
- Meets and exceeds all performance and physical characteristics of SAE J20 R1, SAE J20 R1 H.T. Class A, TMC RP303B Grade I and Grade II, Mil Spec A-A-52426 and various heavy-duty OEM requirements.



PUROSIL Firewall Silicone Hose

Part #	Hose ID	Leg 1	Leg 2	Degree	Wall Thickness
	inches	inches	inches		inches
95-062-2	5/8"	3	5	90	0.19



PUROSIL CAC Hump Hose Hose

Part #	Hose ID		Hose OD		Hose Length
	inches	mm	inches	mm	inches
66-400-1	4	101.6	4.22	107.19	9.5



PUROSIL Gloss Silicone Hose 4-Ply

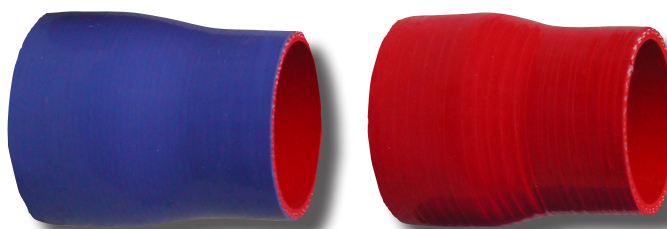
Part #	ID Inches	ID mm	Length	Colour
670BLKGL-200	2	50.8	3ft	Black
670BLKGL-250	2.5	63.5	3ft	Black
670BLKGL-300	3	76.2	3ft	Black
670BLKGL-350	3.5	88.9	3ft	Black
670BLUGL-200	2	50.8	3ft	Blue
670BLUGL-250	2.5	63.5	3ft	Blue
670BLUGL-250X2.5	2.5	63.5	2.5"	Blue
670BLUGL-300	3	76.2	3ft	Blue
670BLUGL-350	3.5	88.9	3ft	Blue
670REDGL-200	2	50.8	3ft	Red
670REDGL-250	2.5	63.5	3ft	Red
670REDGL-300	3	76.2	3ft	Red
670REDGL-350	3.5	88.9	3ft	Red
7049-00050	3	76.2	4"	Red
7049-00052	3	76.2	4"	Red

BRIGHT RED - VIVID BLUE - BLACK



PUROSIL Gloss Silicone Reducers 4-Ply

Part #	ID Inches	ID mm	ID Inches	ID mm	Length	Colour
77-175200-4	1 3/4"	44.4	2"	50.8	4	Blue
77-200250-4	2 1/2"	63.5	2"	50.8	4	Blue
77-200300-4	3"	76.2	2"	50.8	4	Blue
77-225300-4	3"	76.2	2 1/4"	57.1	4	Blue
77-300350-4	3 1/2"	88.9	3"	76.2	4	Blue
7749-00004	3"	76.2	2 1/2"	63.5	4	Blue
7749-00005	3"	76.2	2 1/2"	63.5	4	Red



PUROSIL MARINE Silicone 45° Elbows

Part #	ID (inches)	Bore	Plys	Legs
945MAR-050-6X6	0.5		4	6x6
945MAR-062-6X6	0.62		4	6x6
945MAR-075-6X6	0.75		4	6x6
945MAR-100-6X6	1		4	6x6
945MAR-125-6X6	1.25		4	6x6
945MAR-150-6X6	1.5		4	6x6
945MAR-175-6X6	1.75		4	6x6
945MAR-200-6X6	2		4	6x6
945MAR-225-6X6	2.25		4	6x6
945MAR-250-6X6	2.5		4	6x6
945MAR-275-6X6	2.75		4	6x6
945MAR-300-6X6	3		4	6x6
945MAR-325-6X6	3.25		4	6x6
945MAR-350-6X6	3.5		4	6x6
945MAR-375-6X6	3.75		4	6x6
945MAR-400-6X6	4		4	6x6
945MAR-450-6X6	4.5		4	6x6
945MAR-500-6X6	5	Large Bore	4	6x6
9066MAR-500-01	5	Large Bore	6	6x6
945MAR-600-01	6	Large Bore	6	8.25x8.25
9066MAR-600-01	6	Large Bore	6	8.25x8.25
945MAR-800-01	8	Large Bore	6	10x10
9066MAR-800-01	8	Large Bore	6	10x10
945MAR-1000-6X6	10	Large Bore	6	6x6



- High performance. Meets and exceeds SAE J2006 industry standards.
- Standard leg length 6" x 6" center line to center. High-quality polyester reinforced.
- Recommended for temperatures: -65°F to 350°F (-53.9°C to 176.6°C).
- Available in large bore up to 10 inch diameter.

For Marine Specific Heavy Duty Clamping see our HD range of Orbit clamps on page 34

PUROSIL MARINE Silicone 90° Elbows

Part #	ID (inches)	Bore	Plys	Legs
90MAR-050-6X6	0.5		4	6x6
90MAR-062-6X6	0.62		4	6x6
90MAR-075-6X6	0.75		4	6x6
90MAR-100-6X6	1		4	6x6
90MAR-125-6X6	1.25		4	6x6
90MAR-150-6X6	1.5		4	6x6
90MAR-175-6X6	1.75		4	6x6
90MAR-200-6X6	2		4	6x6
90MAR-225-6X6	2.25		4	6x6
90MAR-250-6X6	2.5		4	6x6
90MAR-275-6X6	2.75		4	6x6
90MAR-300-6X6	3		4	6x6
90MAR-325-6X6	3.25		4	6x6
90MAR-350-6X6	3.5		4	6x6
90MAR-375-6X6	3.75		4	6x6
90MAR-400-6X6	4		4	6x6
90MAR-450-6X6	4.5		4	6x6
90MAR-500-6X6	5	Large Bore	4	6x6
90MAR-1000-6X6	10	Large Bore	6	6x6
9068MAR-600-01	6	Large Bore	6	8.25x8.25
9068MAR-800-01	8	Large Bore	6	10x10
9068MAR-1000-01	10	Large Bore	6	12x12



- High performance. Meets and exceeds SAE J2006 industry standards.
- Standard leg length 6" x 6" center line to center. High-quality polyester reinforced.
- Recommended for temperatures: -65°F to 350°F (-53.9°C to 176.6°C).
- Note: Available in large bore up to 10 inch diameter.

For Marine Specific Heavy Duty Clamping see our HD range of Orbit clamps on page 34

Marine Wet Exhaust - Single Hump

Part #	ID (inches)	Bore	Plys
76SMAR-050	0.5		4
76SMAR-062	0.62		4
76SMAR-075	0.75		4
76SMAR-088	0.88		4
76SMAR-100	1		4
76SMAR-125	1.25		4
76SMAR-150	1.5		4
76SMAR-200	2		4
76SMAR-225	2.25		4
76SMAR-250	2.5		4
76SMAR-275	2.75		4
76SMAR-300	3		4
76SMAR-350	3.5		4
76SMAR-400	4		4
76SMAR-450	4.5		4
76SMAR-500	5		4
76SMAR-550	5.5		4
766SMAR-600	6	Large	6
766SMAR-800	8	Large	6
766SMAR-1000	10	Large	6
766SMAR-1200	12	Large	6
766SMAR-1400	14	Large	6
766SMAR-1600	16	Large	6
766SMAR-1800	18	Large	6
766SMAR-2000	20	Large	6



- High performance.
- Meets and exceeds SAE J2006 industry standards.
- Desired lengths available upon request.
- Available in 4 ply for standard bore and 6 ply for large bore
- High-quality polyester reinforced.
- Recommended for temperatures: -65°F to 350°F (53.9°C to 176.6°C).
- Note: Available in large bore up to 20 inch diameter.

For Marine Specific Heavy Duty Clamping see our HD range of Orbit clamps on page 34



Marine Wet Exhaust - Double Hump

Part #	ID (inches)	Bore	Plys
76MDMAR-050	0.5		4
76MDMAR-062	0.62		4
76MDMAR-075	0.75		4
76MDMAR-087	0.88		4
76MDMAR-100	1		4
76MDMAR-125	1.25		4
76MDMAR-150	1.5		4
76MDMAR-200	2		4
76MDMAR-225	2.25		4
76MDMAR-250	2.5		4
76MDMAR-275	2.75		4
76MDMAR-300	3		4
76MDMAR-350	3.5		4
76MDMAR-400	4		4
76MDMAR-450	4.5		4
76MDMAR-500	5		4
76MDMAR-550	5.5		4
76MDMAR-600	6		6
766DMAR-550	5.5	Large	6
766DMAR-600	6	Large	6
766DMAR-800	8	Large	6
766DMAR-1000	10	Large	6
766DMAR-1200	12	Large	6
766DMAR-1400	14	Large	6
766DMAR-1600	16	Large	6
766DMAR-1800	18	Large	6
766DMAR-2000	20	Large	6



- High performance.
- Meets and exceeds SAE J2006 industry standards.
- Desired lengths available upon request.
- Available in 4 ply for standard bore and 6 ply for large bore
- High-quality polyester reinforced.
- Recommended for temperatures: -65°F to 350°F (53.9°C to 176.6°C).
- Note: Available in large bore up to 20 inch diameter.

For Marine Specific Heavy Duty Clamping see our HD range of Orbit clamps on page 34



SALES DIRECT: 03 97 57 4949 sales@tieco.com.au

Ver: 50-01



Page 21



Marine Straight Hose

Straight silicone hose for wet exhaust marine applications. SAE J2006 compliant for reliability and safety. Available in large bore up to 20 inches.

Part #	ID (inches)	Plys
70MAR-031	0.31	4
70MAR-038	0.38	4
70MAR-050	0.5	4
70MAR-062	0.62	4
70MAR-075	0.75	4
70MAR-087	0.87	4
70MAR-100	1	4
70MAR-106	1.06	4
70MAR-112	1.12	4
70MAR-125	1.25	4
70MAR-131	1.31	4
70MAR-138	1.38	4
70MAR-150	1.5	4
70MAR-162	1.62	4
70MAR-175	1.75	4
70MAR-187	1.87	4
70MAR-200	2	4
70MAR-212	2.12	4
70MAR-225	2.25	4
70MAR-238	2.38	4
70MAR-250	2.5	4
70MAR-262	2.62	4
70MAR-275	2.75	4
70MAR-287	2.87	4
70MAR-300	3	4
70MAR-312	3.12	4
70MAR-325	3.25	4
70MAR-338	3.38	4
70MAR-350	3.5	4
70MAR-362	3.62	4
70MAR-375	3.75	4

Features & Benefits

- High performance.
- Meets and exceeds SAE J2006 industry standards.
- Available in 4 ply for standard bore and 6 ply for large bore.
- High-quality polyester reinforced.
- Recommended for temperatures: -65°F to 350°F (-53.9°C to 176.6°C).
- Standard lengths: 36" and 144".
Note: Special lengths available upon request.



For Marine Specific Heavy Duty Clamping see our HD range of Orbit clamps on page 34

Marine Straight Hose

Straight silicone hose for wet exhaust marine applications. SAE J2006 compliant for reliability and safety. Available in large bore up to 20 inches.

Features & Benefits

- High performance.
- Meets and exceeds SAE J2006 industry standards.
- Available in 4 ply for standard bore and 6 ply for large bore.
- High-quality polyester reinforced.
- Recommended for temperatures: -65°F to 350°F (-53.9°C to 176.6°C).
- Standard lengths: 36" and 144". Note: Special lengths available upon request.

Part #	ID (inches)	Plys
70MAR-400	4	4
70MAR-425	4.25	4
70MAR-412	4.12	4
70MAR-450	4.5	4
70MAR-500	5	4
7060MAR-550	5.5	6
7060MAR-600	6	6
7060MAR-662	6.62	6
7060MAR-700	7	6
7060MAR-800	8	6
7060MAR-1000	10	6
7060MAR-1200	12	6
7060MAR-1400	14	6
7060MAR-1600	16	6
7060MAR-1800	18	6
7060MAR-2000-12	20	6



- Marine Hose: the SAE J2006 "Marine Exhaust Hose" standard which covers the flexible components of marine engine wet exhaust systems from the connection at the engine exhaust manifold to the hull or overboard discharge fittings, this includes silicone hose. This standard calls for the silicone to have properties with greater elongation resistance and a higher tensile strength compared to the, "Surface Vehicle Standard SAE J20
- Standard SAE J20 Coolant System Hoses". And so just about any product shape can be a marine hose, the difference is the material properties required by SAEJ2006.

For Marine Specific Heavy Duty Clamping see our HD range of Orbit clamps on page 34

Marine Flex Hose - Convoluted Smooth Bore

2-ply, flat cover flex hose for wet exhaust marine applications.



Part #	ID (inches)	Ply	Standard Lengths
92MAR-100-144	1	2	36" or 144"
92MAR-106-144	1.06	2	36" or 144"
92MAR-125-144	1.25	2	36" or 144"
92MAR-131-144	1.31	2	36" or 144"
92MAR-138-144	1.38	2	36" or 144"
92MAR-150-144	1.5	2	36" or 144"
92MAR-162-144	1.62	2	36" or 144"
92MAR-175-144	1.75	2	36" or 144"
92MAR-187-144	1.87	2	36" or 144"
92MAR-200-144	2	2	36" or 144"
92MAR-212-144	2.12	2	36" or 144"
92MAR-225-144	2.25	2	36" or 144"
92MAR-238-144	2.38	2	36" or 144"
92MAR-250-144	2.5	2	36" or 144"
92MAR-262-144	2.62	2	36" or 144"
92MAR-275-144	2.75	2	36" or 144"
92MAR-287-144	2.87	2	36" or 144"
92MAR-300-144	3	2	36" or 144"
92MAR-312-144	3.12	2	36" or 144"
92MAR-325-144	3.25	2	36" or 144"
92MAR-338-144	3.38	2	36" or 144"
92MAR-350-144	3.5	2	36" or 144"
92MAR-362-144	3.62	2	36" or 144"
92MAR-375-144	3.75	2	36" or 144"
92MAR-400-144	4	2	36" or 144"
92MAR-425-144	4.25	2	36" or 144"
92MAR-450-144	4.5	2	36" or 144"
92MAR-450-475	4.75	2	36" or 144"
92MAR-500-475	5	2	36" or 144"

Marine Flex Hose 2-Ply Convoluted Smooth Bore

- High performance.
- Meets and exceeds SAE J2006 industry standards.
- High-quality polyester reinforced.
- Recommended for temperatures: -65°F to 350°F (-53.9°C to 176.6°C).
- Standard lengths: 36" and 144".
Note: Special lengths available upon request.

Marine Flex Hose - Flat Cover Smooth Bore

2-ply, flat cover flex hose for wet exhaust marine applications.

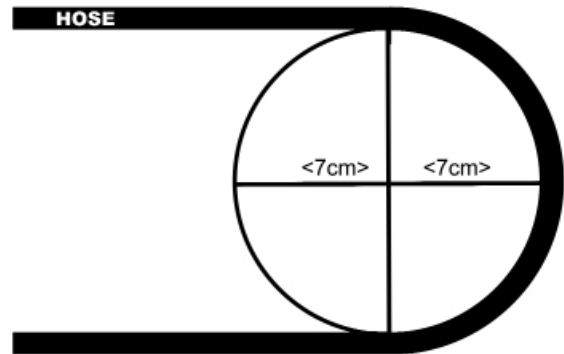
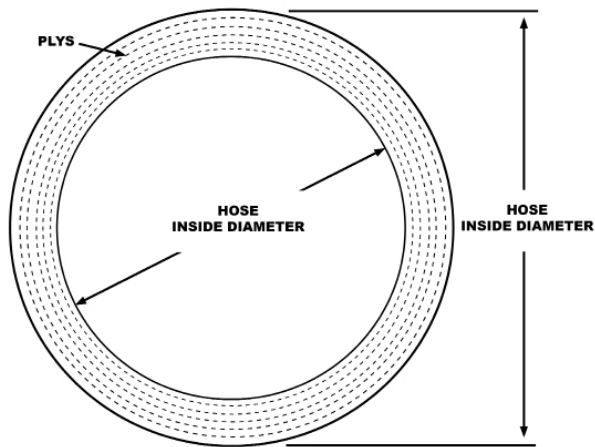


Marine Flex Hose 2-Ply Flat Cover High Dynamic

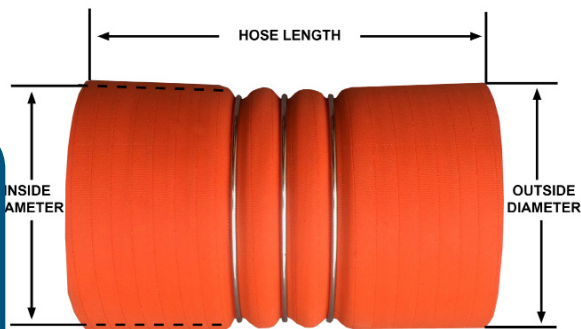
- High performance.
- Meets and exceeds SAE J2006 industry standards.
- High-quality polyester reinforced.
- Recommended for temperatures: -65°F to 350°F (-53.9°C to 176.6°C).

Part #	ID (inches)	Ply	Standard Lengths
92FMAR-100-144	1	2	144"
92FMAR-106-144	1.06	2	144"
92FMAR-125-144	1.25	2	144"
92FMAR-131-144	1.31	2	144"
92FMAR-138-144	1.38	2	144"
92FMAR-150-144	1.5	2	144"
92FMAR-162-144	1.62	2	144"
92FMAR-175-144	1.75	2	144"
92FMAR-187-144	1.87	2	144"
92FMAR-200-144	2	2	144"
92FMAR-212-144	2.12	2	144"
92FMAR-225-144	2.25	2	144"
92FMAR-238-144	2.38	2	144"
92FMAR-250-144	2.5	2	144"
92FMAR-262-144	2.62	2	144"
92FMAR-275-144	2.75	2	144"
92FMAR-287-144	2.87	2	144"
92FMAR-300-144	3	2	144"
92FMAR-312-144	3.12	2	144"
92FMAR-325-144	3.25	2	144"
92FMAR-338-144	3.38	2	144"
92FMAR-350-144	3.5	2	144"
92FMAR-362-144	3.62	2	144"
92FMAR-375-144	3.75	2	144"
92FMAR-400-144	4	2	144"
92FMAR-425-144	4.25	2	144"
92FMAR-450-144	4.5	2	144"
92FMAR-475-144	4.75	2	144"
92FMAR-500-144	5	2	144"

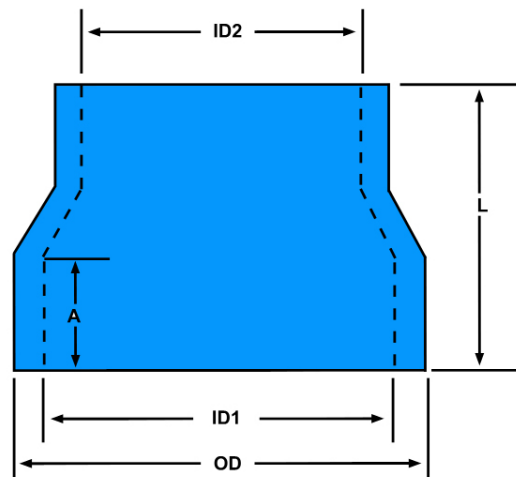
Basic Hose Dimensions: Images & Descriptions



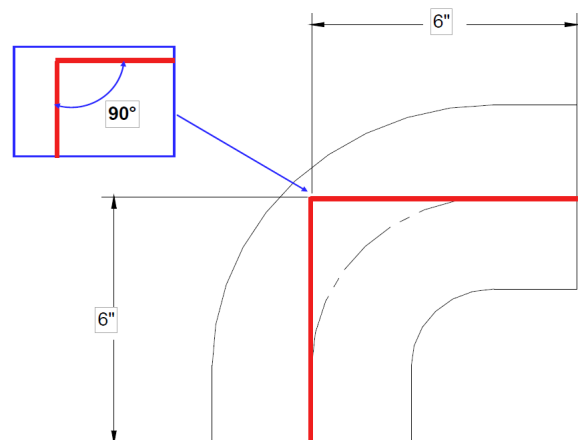
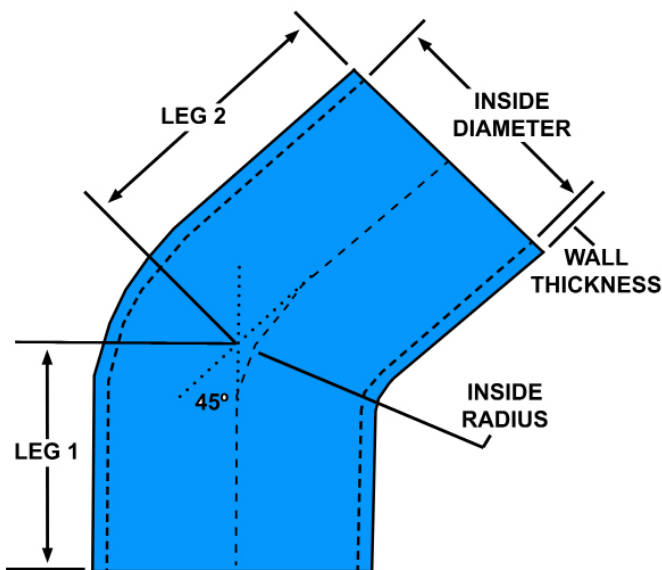
BEND RADIUS MINIMUM: the smallest bend radius at which the hose can be used without it kinking. The smaller the bend radius, the greater the material flexibility.



CHARGE AIR COOLER HOSE (CAC): the convoluted shape is designed to handle slight misalignments and to isolate vibration between hose ends, the rings prevent excessive expansion from charge air pressure.



TRANSITION or REDUCER DIMENSIONS



LEG LENGTH: this refers to a measurement on an elbow from the apex of the radius to the edge of the hose. Elbows sometimes require one leg longer than the other. The picture above shows a Leg Length of 6".

WHY PUROSIL FLUROCARBON **Liner**?

- Designed to resist aromatic and aliphatic hydrocarbons as well as alcohols, water, and fuel additives.
- The fluorocarbon elastomer provides an excellent barrier to hydrocarbons and a volume swell of less than **5%** in diesel fuel.
- The **Purosil** design offers an excellent chemical bond between the fluorocarbon liner and the silicone rubber composite structure.
- The continuous operating temperature is **235°C**, and the low temperature brittleness point is **-43°C**.
- The combination of aramid fabric, silicone rubber and fluorocarbon liner provides excellent performance and enhanced features for the new generation of EPA-compliant truck and diesel engine hoses.

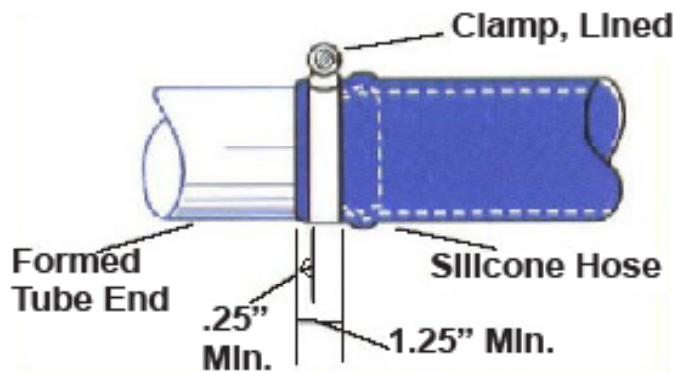


Distributed in Australia by:
Tieco Australia

For More Information Visit:
www.purosil.com.au

PUROSIL Clamping Bulliten

Clamping Instructions



Worm Gear Liner Clamps

Worm gear or constant torque type stainless steel clamps with inner liner are recommended for silicone heater and coolant hose.

Initial clamp torque should be **40 inch-lbs.**

If re-torquing is required, it should be limited to 20 inch-lbs.

Do not use serrated, slotted, or wire type clamps. Recommended bead specifications MS-33660 or SAE J 1231

NOTICE

Liner Clamps protect the outer
Hose covering

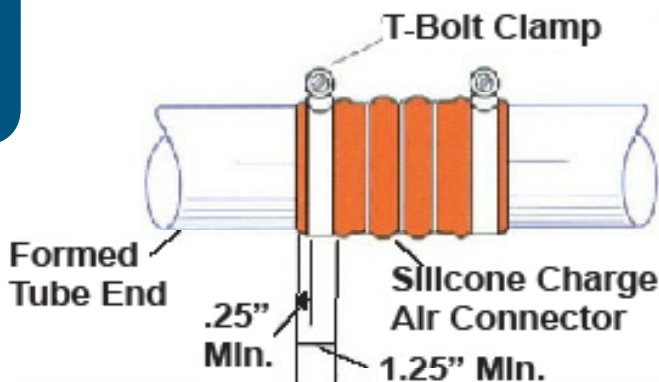


Constant Torque Clamps

Constant torque T-bolt style clamps help to retain clamp load.

Torque to 70-75 in - lbs.

Note: For Charge Air Cooler Hose (CAC) use only T-bolt style clamps. Recommended bead specifications are MS-33660 or SAE J 1231.



NOTICE

Liner Clamps protect the outer
Hose covering





Purosil Hose Clamp Guide

Clamp #	Dia. Range	670 / 90 / 70 Series Hose						80 Series Hoses			
XSV0010	.560 - 1.06	038	050					018	025	038	050
XSV0012	.690 - 1.250	050	062	075				057	062	075	
XSV0020	.810 - 1.750	062	075	087	100	112	125	062	075	100	
XSV0028	1.312 - 2.250	100	112	125	138	150	162				
XSV0036	1.810 - 2.750	150	182	175	187	200	212	225			
XSV0040	2.060 - 3.000	175	187	200	212	225	238	250			
XSV0048	2.560 - 3.500	225	238	250	262	275	287				
XSV0052	2.810 - 3.750	250	262	275	287	300	325				
XSV0064	3.560 - 4.500	350	400								
XSV0080	4.620 - 5.500	450	500								

Mission EPDM Hose Clamp Guide

Clamp #	Diameter Ranges		Mission EPDM Series Hose
Z8-30	3.31" (84.0)	3.59" (91.1)	3" ID Hoses
Z8-35	3.81" (96.7)	4.09" (103.8)	3.5" ID Hoses
Z8-40	4.31" (109.4)	4.59" (116.5)	4" ID Hoses
Z8-45	4.81" (122.1)	5.09" (129.2)	4.5" ID Hoses
Z8-50	5.31" (134.8)	5.59" (141.9)	5" ID Hoses
Z8-55	5.94" (150.8)	6.21" (157.7)	5.5" ID Hoses
Z8-60	6.38" (162.0)	6.65" (168.9)	6" ID Hoses
Z8-70	7.38" (187.4)	7.78" (197.6)	7" ID Hoses
Z8-80	8.25" (209.5)	8.56" (217.4)	8" ID Hoses
Z8-100	10.50" (266.7)	10.91" (277.1)	10" ID Hoses

BREEZE® Hi-Torque Liner Clamps



This is the original and still the strongest worm-drive clamp available. Use it where conventional clamps are inadequate or in applications where double and triple clamping is currently needed.

Withstands more than 3 times the SAE torque requirements for type F worm-gear clamps. Eight screw-threads are engaged in the band simultaneously for incredible torquing drive (over 15 Nm), sealing pressure and vibration resistance. 5/8" (15.8 mm) band.

Nominal Installation Torque Recommendations:
High-Torque Liner Clamps - (15 Nm)



410 Stainless Steel Hex Screw

Part #	Band Width	Min	Max
HTM250LB	5/8" (15.7)	1.77" (45.0)	2.63" (67.0)
HTM300LB	5/8" (15.7)	2.24" (57.0)	3.11" (79.0)
HTM350LB	5/8" (15.7)	2.75" (70.0)	3.62" (92.0)
HTM400LB	5/8" (15.7)	3.62" (83.0)	4.13" (105.0)
HTM450LB	5/8" (15.7)	3.74" (95.0)	4.64" (118.0)
HTM500LB	5/8" (15.7)	4.25" (108.0)	5.11" (130.0)
HTM550LB	5/8" (15.7)	4.76" (121.0)	5.63" (143.0)
HTM650LB	5/8" (15.7)	5.74" (146.0)	6.61" (168.0)
HTM750LB	5/8" (15.7)	6.77" (172.0)	7.63" (194.0)

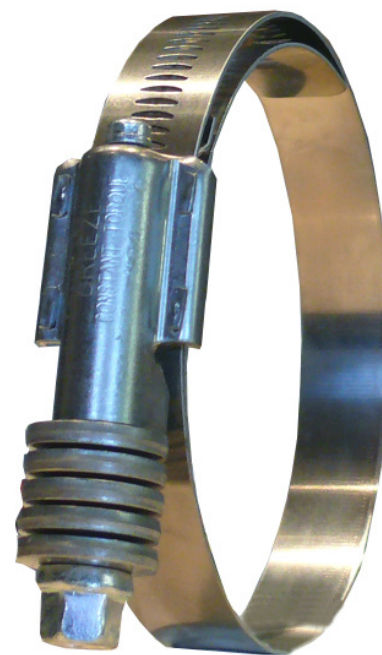


- 1 Slotted 5/16" hex head screw = versatile and easy installation.
- 2 5/8" stainless steel band = greater corrosion resistance.
- 3 Extended internal liner = covers gear slots in band to protect all types of hose from damage and helps to maintain consistent sealing pressure.
- 4 Heavy Duty four piece "Quadra-Lock" construction = extra strength and torque conversion.

BREEZE Constant-Torque® Clamps



The Breeze Constant Torque® is a breakthrough in clamping technology. A belleville spring mechanism permits the CT® clamp to automatically increase or decrease its own diameter due to changes in operational or environmental temperatures. This unique design eliminates “cold flow” leaks. Both the Aero-Seal and Heavy Duty construction CT clamps have an extended inner liner which protects all types of hoses from damage and helps to maintain consistent sealing pressure.



Product line CT: 3/8" Hex Head

Per SAE standard J1508 Type "SLHD"



Nominal Installation Torque Recommendations:

Heavy-Duty CONSTANT-TORQUE® - (10.2Nm)

CONSTANT TORQUE DIMENTIONS

Part #	Band Width	Min	Max
CT175L	5/8" (15.7)	0.94" (25.0)	1.73" (44.0)
CT200L	5/8" (15.7)	1.26" (32.0)	2.24" (57.0)
CT250L	5/8" (15.7)	1.77" (45.0)	2.63" (67.0)
CT300L	5/8" (15.7)	2.24" (57.0)	3.11" (79.0)
CT350L	5/8" (15.7)	2.75" (70.0)	3.62" (92.0)
CT400L	5/8" (15.7)	3.62" (83.0)	4.13" (105.0)
CT450L	5/8" (15.7)	3.74" (95.0)	4.64" (118.0)
CT500L	5/8" (15.7)	4.25" (108.0)	5.11" (130.0)
CT550L	5/8" (15.7)	4.76" (121.0)	5.63" (143.0)
CT600L	5/8" (15.7)	5.23" (133.0)	6.14" (156.0)
CT650L	5/8" (15.7)	5.74" (146.0)	6.61" (168.0)
CT700L	5/8" (15.7)	6.26" (159.0)	7.12" (181.0)
CT750L	5/8" (15.7)	6.77" (172.0)	7.63" (194.0)
CT800L	5/8" (15.7)	7.24" (184.0)	8.11" (206.0)
CT850L	5/8" (15.7)	7.75" (197.0)	8.62" (219.0)
CT900L	5/8" (15.7)	8.26" (210.0)	9.13" (232.0)

BREEZE® Aero Seal® Liner Clamps

- Breeze® Aero Seal® liner clamps are designed with a quadra lock construction which enables
- more tightening torque to be delivered to the perforations while maximising vibration resistance.
- Manufactured in a 1/2" (12.7mm) band. 5/16" Hex and Stainless Steel screw.
- Nominal Torque Setting 7 Nm

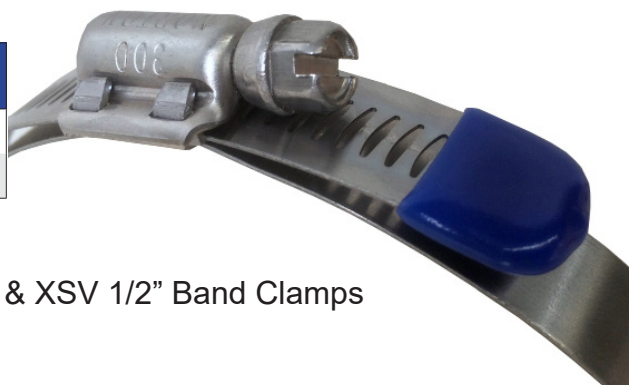


410 Stainless Steel Hex Screw

Part #	Band Width	Min	Max
90040006	1/2" (12.7)	0.44" (11.2)	0.78" (19.8)
90040008	1/2" (12.7)	0.50" (12.7)	0.91" (23.1)
90040010	1/2" (12.7)	0.56" (14.2)	1.06" (26.9)
90040012	1/2" (12.7)	0.69" (17.5)	1.25" (31.7)
90040016	1/2" (12.7)	0.81" (20.6)	1.50" (38.1)
90040020	1/2" (12.7)	0.81" (20.6)	1.75" (44.4)
90040024	1/2" (12.7)	1.06" (26.9)	2.00" (50.8)
90040028	1/2" (12.7)	1.31" (33.3)	2.25" (57.1)
90040032	1/2" (12.7)	1.56" (39.6)	2.50" (63.5)
90040036	1/2" (12.7)	1.81" (45.9)	2.75" (69.8)
90040040	1/2" (12.7)	2.06" (52.3)	3.00" (76.2)
90040044	1/2" (12.7)	2.31" (58.6)	3.25" (82.5)
90040048	1/2" (12.7)	2.56" (65.0)	3.50" (88.9)
90040052	1/2" (12.7)	2.81" (71.4)	3.75" (95.2)
90040064	1/2" (12.7)	3.56" (90.4)	4.50" (114.3)

Soft Rubber Push-On Safety Caps

Part #	Band Width	Colour
7001004	1/2" (12.7)	Blue



Suits both Breeze & XSV 1/2" Band Clamps

XSV Superior Stainless Liner Clamps



- XSV Superior liner clamps are designed for Heavy Duty Vehicle and Equipment Applications.
- Tightening torque 5-9.5 Nm.
- Recommended 6.77 nm. (60 in/lb) for Silicone Hoses.
- Manufactured in a 14.2mm 301 Stainless Steel band. 8mm Hex 305 Stainless Steel screw.
- Quad Lock Housing
Still operable after 500 hours Salt Spray Test-3rd party testing
- ASTM B117-6(MOD) ASTM D1654-2008



XSV Superior Liner Clamps			
Part #	Band Width	Min	Max
XSV0010	14.2mm	0.56" (14.2)	1.06" (26.9)
XSV0012	14.2mm	0.69" (17.5)	1.25 (31.7)
XSV0016	14.2mm	0.81" (20.6)	1.50 (38.1)
XSV0020	14.2mm	0.81" (20.6)	1.75 (44.4)
XSV0024	14.2mm	1.06" (26.9)	2.00" (50.8)
XSV0028	14.2mm	1.31" (33.3)	2.25" (57.1)
XSV0032	14.2mm	1.56" (39.6)	2.50" (63.5)
XSV0036	14.2mm	1.81" (45.9)	2.75" (69.8)
XSV0040	14.2mm	2.06" (52.3)	3.00" (76.2)
XSV0044	14.2mm	2.31" (58.6)	3.25" (82.5)
XSV0048	14.2mm	2.56" (65.0)	3.50" (88.9)
XSV0052	14.2mm	2.81" (71.4)	3.75" (95.2)
XSV0064	14.2mm	3.56" (90.4)	4.50" (114.3)
XSV0080	14.2mm	4.62" (117.3)	5.50" (139.7)



ORBIT Heavy Duty Clamps

- ORBIT Heavy Duty Clamps are designed with three spot welding on the underside of the band, with a unique inward band forming to provide higher strength for applications which require a high tightening torque or re-clamping reinforced heavy duty hose.
- ORBIT Heavy Duty Clamps are available in 2 grades W2 or W4 (HDXXW2/HDXXW4):
 Grade W2: Band and Bridge: 430 stainless steel and zinc plated screw.
 Grade W4: Band, Bridge and Screw: All 304 grade Stainless Steel.
- CORROSION RESISTANCE (W2) Salt Spray Testing > 144 hours
- CORROSION RESISTANCE (W4) Salt Spray Testing > 500 hours



W5 Grade available upon request.

Size Range	Band Width
17mm-43mm	18mm
43mm-68mm	20mm
68mm-130mm	25mm
130mm-430mm	30mm

Min	Max	Band Width	W2	W4
17	19	18	HD18W21719	HD18W41719
19	21	18	HD18W21921	HD18W41921
21	23	18	HD18W22123	HD18W42123
23	25	18	HD18W22325	HD18W42325
25	27	18	HD18W22527	HD18W42527
27	29	18	HD18W22729	HD18W42729
29	31	18	HD18W22931	HD18W42931
31	34	18	HD18W23134	HD18W43134
34	37	18	HD18W23437	HD18W43437
37	40	18	HD18W23740	HD18W43740
40	43	18	HD18W24043	HD18W44043



ORBIT Heavy Duty Clamps

Min	Max	Band Width	W2	W4
43	47	20	HD20W24347	HD20W44347
47	51	20	HD20W24751	HD20W44751
51	55	20	HD20W25155	HD20W45155
55	59	20	HD20W25559	HD20W45559
59	63	20	HD20W25963	HD20W45963
63	68	20	HD20W26368	HD20W46368

Min	Max	Band Width	W2	W4
68	73	25	HD25W26873	HD25W46873
73	79	25	HD25W27379	HD25W47379
79	85	25	HD25W27985	HD25W47985
85	91	25	HD25W28591	HD25W48591
91	97	25	HD25W29197	HD25W49197
97	104	25	HD25W297104	HD25W497104
104	112	25	HD25W2104112	HD25W4104112
112	121	25	HD25W2112121	HD25W4112121
121	130	25	HD25W2121130	HD25W4121130

Min	Max	Band Width	W2	W4
130	140	30	HD30W2130140	HD30W4130140
140	150	30	HD30W2140150	HD30W4140150
150	162	30	HD30W2150162	HD30W4150162
162	174	30	HD30W2162174	HD30W4162174
174	187	30	HD30W2174187	HD30W4174187
187	200	30	HD30W2187200	HD30W4187200
200	213	30	HD30W2200213	HD30W4200213
213	226	30	HD30W2213226	HD30W4213226
226	239	30	HD30W2226239	HD30W4226239
239	252	30	HD30W2239252	HD30W4239252
252	265	30	HD30W2252265	HD30W4252265
265	278	30	HD30W2265278	HD30W4265278
278	291	30	HD30W2278291	HD30W4278291
291	304	30	HD30W2291304	HD30W4291304
304	317	30	HD30W2304317	HD30W4304317
317	330	30	HD30W2317330	HD30W4317330
365	379	30		HD30W4365379
416	430	30		HD30W4416430



ORBIT Solid Band Clamps (DIN 3017 Standard)

- The band thread is precisely cold formed into the band which results in a smooth surface underside to optimize hose protection and the band edges are raised to prevent damage to the hose.
- They are manufactured and tested according to the German Standard DIN3017.
- ORBIT Solid Band Clamps (Din 3017 Standard) are available in 2 grades W2 or W3
- Grade W2: Band and Housing: 430 stainless steel and zinc plated screw.
- Grade W3: Band, Housing and Screw: All 430 grade Stainless Steel.
- CORROSION RESISTANCE (W2) Salt Spray Testing > 144 hours
- CORROSION RESISTANCE (W3) Salt Spray Testing > 400 hours



Min	Max	BandWidth	W2	W3
8	12	9.5	W2D9812	W3D9812
10	16	9.5	W2D91016	W3D91016
12	20	9.5	W2D91220	W3D91220
12	22	9.5	W2D91222	W3D91222
16	25	9.5	W2D91625	W3D91625
16	27	9.5	W2D91627	W3D91627
20	32	9.5	W2D92032	W3D92032
25	40	9.5	W2D92540	W3D92540
30	45	9.5	W2D93045	W3D93045
32	50	9.5	W2D93250	W3D93250
40	60	9.5	W2D94060	W3D94060
50	70	9.5	W2D95070	W3D95070
60	80	9.5	W2D96080	W3D96080
70	90	9.5	W2D97090	W3D97090
80	100	9.5	W2D980100	W3D980100
90	110	9.5	W2D990110	W3D990110
100	120	9.5	W2D9100120	W3D9100120
110	130	9.5	W2D9110130	W3D9110130
120	140	9.5	W2D9120140	W3D9120140
130	150	9.5	W2D9130150	W3D9130150
140	160	9.5	W2D9140160	W3D9140160

ORBIT Solid Band Clamps (DIN 3017 Standard)



Min	Max	BandWidth	W2	W3
16	25	12	W2D121625	W3D121625
16	27	12	W2D121627	W3D121627
20	32	12	W2D122032	W3D122032
25	40	12	W2D122540	W3D122540
30	45	12	W2D123045	W3D123045
35	50	12	W2D123550	W3D123550
40	60	12	W2D124060	W3D124060
50	70	12	W2D125070	W3D125070
60	80	12	W2D126080	W3D126080
70	90	12	W2D127090	W3D127090
80	100	12	W2D1280100	W3D1280100
90	110	12	W2D1290110	W3D1290110
100	120	12	W2D12100120	W3D12100120
110	130	12	W2D12110130	W3D12110130
120	140	12	W2D12120140	W3D12120140
130	150	12	W2D12130150	W3D12130150
140	160	12	W2D12140160	W3D12140160
150	170	12	W2D12150170	W3D12150170
160	180	12	W2D12160180	W3D12160180
170	190	12	W2D12170190	W3D12170190
180	200	12	W2D12180200	W3D12180200
190	210	12	W2D12190210	W3D12190210
200	220	12	W2D12200220	W3D12200220
210	230	12	W2D12210230	W3D12210230
220	240	12	W2D12200240	W3D12220240



EVERYWHERE FOR EVERYONE

ORBIT Solid Band Clamps (British Standard)

- ORBIT Solid Band Clamps are optimized for hose protection by raising the band edges and precisely stamping the band to provide a smooth underside surface. It provides the ultimate exterior hose wall protection with a non-perforated band, which gives more protection to the soft hose surface, during the installation and usage.
- They are tested and “Kitemark™” certified according to British Standard 5315:1991.
- ORBIT Solid Band Clamps (British Standard) are available in 3 grades W1, W4 & W5:
Grade W1: Band, Housing and Screw: Zinc Plated Steel.
Grade W4: Band, Housing and Screw: All 304 grade Stainless Steel.
Grade W5: Band, Housing and Screw: All 316 grade Stainless Steel.
- CORROSION RESISTANCE (W1) Salt Spray Testing > 144 hours
- CORROSION RESISTANCE (W4) Salt Spray Testing > 500 hours
- CORROSION RESISTANCE (W5) Salt Spray Testing > 1000 hours



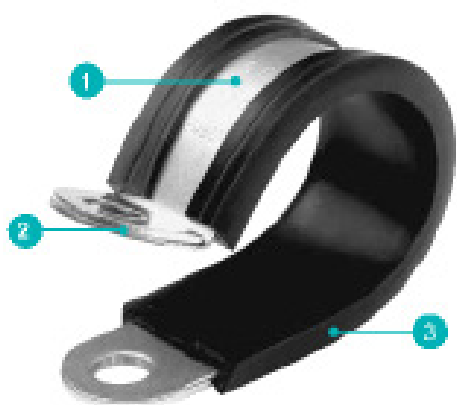
Min	Max	Band Width	W1	W4	W5
9.5	12	9.5	W1913	W4913	W5913
11	16	9.5	W11316	W41316	W51316
13	20	9.5	W11319	W41319	W51319
16	22	12	W11622	W41622	W51622
18	25	12	W11925	W41925	W51925
22	30	12	W12229	W42229	W52229
25	35	12	W12535	W42535	W52535
30	40	12	W12841	W42841	W52841
35	50	12	W13148	W43148	W53148
40	55	12	W13854	W43854	W53854
45	60	12	W14460	W44460	W54460
55	70	12	W15070	W45070	W55070
60	80	12	W16080	W46080	W56080
70	90	12	W17090	W47090	W57090
85	100	12	W183102	W483102	W583102
90	120	12	W195115	W495115	W595115
104	127	12	W1104127	W4104127	W5104127
130	150	12	W1127146	W4127146	W5127146
130	160	12	W1146159	W4146159	W5146159
150	180	12	W1149178	W4149178	W5149178
170	200	12	W1175203	W4175203	W5175203
190	230	12	W1200229	W4200229	W5200229
220	250	12	W1225254	W4225254	W5225254
240	280	12	W1251281	W4251281	W5251281

TIECO Heavy Duty Pipe Retaining Clips to DIN 3016

Part #	Clamping Range(mm)	Band Width(mm)
7007177	10	15
7007178	15	20
7007179	20	15
7007180	20	20
7007181	25	12
7007182	25	20
7007183	30	15
7007184	30	20
7007185	35	15
7007186	40	20
7007187	50	20



Our pipe retaining clips are suitable for all kinds of fastening and retaining applications: pipes, cables, cable harnesses, cable protection pipes, hoses and other lines. Easy installation and secure fastening. Reinforced band ends for extremely high mechanical loads. Rubber profile protects against vibrations and creeping water, is sound-absorbent and protects against contact corrosion.



1 Form-fit, adjustable band

2 Reinforced band ends

– strengthen the band; prevent retaining sections from tearing or becoming loose during exposure to extremely high mechanical loads

3 Rubber Profile

– improved form closure between clip and clamping fixture

RG RAY T-Bolt Clamps Heavy Duty

RG RAY® T-bolt Hose Clamps are intended for use where other hose clamps do not work. Typical applications include air intake systems, cold side charge air hose connections and a variety of hose, pipe and ducting joints. Available in diameters 1.75 inch and larger, T-bolt Hose Clamps can be configured to suit almost any application and operating environment. FLEX SEAL™ Hose Clamps incorporate a compression spring to accommodate joint diameter changes resulting from hose set and thermal effects. They are accepted industry wide for use on charge air and coolant system hose connections. Heavy Duty T-bolt and FLEX SEAL™ Hose Clamps usually have a diameter take up range of 5/16 inch. Many sizes are in stock available for quick delivery

RG RAY® 300 Series T-BOLT HOSE CLAMP

Part #	Band Width	Min	Max
Z8-225	3/4" (19.0)	2.50" (63.5)	2.78" (70.6)
Z8-30	3/4" (19.0)	3.31" (84.0)	3.59" (91.1)
Z8-35	3/4" (19.0)	3.81" (96.7)	4.09" (103.8)
Z8-40	3/4" (19.0)	4.31" (109.4)	4.59" (116.5)
Z8-45	3/4" (19.0)	4.81" (122.1)	5.09" (129.2)
Z8-475	3/4" (19.0)	5.06" (128.5)	5.37" (136.3)
Z8-50	3/4" (19.0)	5.31" (134.8)	5.59" (141.9)
Z8-55	3/4" (19.0)	5.94" (150.8)	6.21" (157.7)
Z8-55S	3/4" (19.0)	5.80" (147.5)	6.10" (155.0)
Z8-60	3/4" (19.0)	6.38" (162.0)	6.65" (168.9)
7001003	3/4" (19.0)	7.06" (179.3)	7.37" (187.1)
Z8-70	3/4" (19.0)	7.38" (187.4)	7.78" (197.6)
Z8-80	3/4" (19.0)	8.25" (209.5)	8.56" (217.4)
Z8-100S	3/4" (19.0)	10.50" (266.7)	10.91" (277.1)
Z8-100	3/4" (19.0)	10.50" (266.7)	10.91" (274.5)



Recommended Maximum Torque

Metric (mm) Imperial (UNF)

6	1/4	10Nm
8	5/16	20Nm
10	3/8	27Nm
12	1/2	42Nm

RG RAY T-Bolt Clamps Stainless Steel

Stainless steel band and bridge / shoe. Stainless steel bolt, trunnion and lock nut
Strong – withstands high ultimate torque needed to seal demanding applications
Effective – 360° circumferential sealing – no leaks Efficient – low installation torque
develops high clamping pressure on hose connection Safe – smooth round edge band
protects soft hose – no slots in band to extrude hose material

RG RAY® 853 - SERIES T-BOLT HOSE CLAMP (SAE TYPE TB)

3/4 inch wide Stainless Steel band with floating bridge, 1/4 inch Stainless steel T-bolt and hardware

RG RAY® 853 - SERIES T-BOLT HOSE CLAMP			
Part #	Band Width	Min	Max
853-33	3/4" (19.0)	2.06" (52.3)	2.31" (58.6)
853-35	3/4" (19.0)	2.19" (55.6)	2.50" (63.5)
853-41	3/4" (19.0)	2.56" (65.0)	2.87" (72.8)
853-43	3/4" (19.0)	2.69" (68.3)	3.00" (76.2)
853-49	3/4" (19.0)	3.06" (77.7)	3.37" (85.5)
853-53	3/4" (19.0)	3.31" (84.0)	3.62" (91.9)
853-69	3/4" (19.0)	4.31" (109.4)	4.62" (117.3)

STAINLESS STEEL

ABOUT RG RAY®

Since 1972, R.G.RAY® has been one of the world's leading suppliers of heavy-duty engineered clamps for the commercial and passenger vehicle industries. With product lines that include Heavy-Duty T-Bolt and FLEX SEAL™ Hose Clamps, V-Band and V-Retainer Clamps, Special Strap Assemblies and a broad variety of Special Application Clamps, R.G.RAY® provides quality products that consistently meet customer requirements for the most challenging applications.



RG RAY® 848 SERIES FLEX SEAL T-Bolt Clamps

R.G.Ray® 848-Series Flex-Seal™ Heavy Duty hose clamps feature 3/4 inch wide stainless steel with a floating bridge, 1/4 inch plated steel T-bolt and hardware. Includes special long travel spring to accommodate larger changes in joint diameters. Spring Design adds constant tension performance.

- 3/4" (19mm) band
- 1/4" (6.4 mm) Plated Steel T-bolt
- Diameter Range: 1 1/2" – 14" (43 mm – 357mm)
- SAE Standard J1508 Type SLTB
- Torque Setting 7.3 Nm

RG RAY® 848 - SERIES T-BOLT SPRING HOSE CLAMP			
Part #	Band Width	Min	Max
848-36	3/4" (19.0)	2.25" (57.1)	2.49" (63.2)
848-42	3/4" (19.0)	2.63" (66.8)	2.94" (74.6)
848-43	3/4" (19.0)	2.69" (68.3)	3.00" (76.2)
848-45	3/4" (19.0)	2.81" (71.3)	3.12" (79.2)
848-50	3/4" (19.0)	3.12" (79.2)	3.43" (87.1)
848-52	3/4" (19.0)	3.25" (82.5)	3.45" (87.6)
848-58	3/4" (19.0)	3.63" (92.2)	3.87" (98.2)
848-62	3/4" (19.0)	3.88" (98.5)	4.19" (106.4)
848-66	3/4" (19.0)	4.13" (104.9)	4.37" (110.9)
848-72	3/4" (19.0)	4.50" (114.3)	4.74" (120.3)
848-74	3/4" (19.0)	4.63" (117.6)	4.87" (123.6)
848-82	3/4" (19.0)	5.13" (130.3)	5.37" (136.3)



Capable of withstanding high tightening torques
Ability to seal high pressure applications.
Torque Setting: 7.3 Nm

DISCLAIMER

The products supplied by the Tieco Group ("Products") are manufactured according to strict specifications. However, given that some products or materials used in manufacture are imported or may become unavailable from time to time, then it may be necessary to substitute on occasions. In that event, Tieco Group will endeavour to make the changes seamlessly and in a manner that will not affect performance or appearance. However, this may not always be possible. The purchaser of the Products accepts that these changes or substitutions will occur from time to time and are beyond Tieco's control.

RG RAY® General Purpose V-Insert Clamps

Developing high axial clamping force with high burst pressure capability. V-Inserts are welded to a flexible outer band. Typical applications include heavy duty diesel engine exhaust and turbochargers.

V-Clamps can be used to hold together virtually any flanged joint. Common applications range from light to heavy duty and include diesel engines, turbochargers, pumps, filter vessels, tubing and countless other flanged items. V-Clamps are produced in a wide range of materials based upon application requirements. Typical material is 300 series Stainless Steel, but plated carbon steel or specialty materials, such as, A286, Inconel and others are not uncommon.

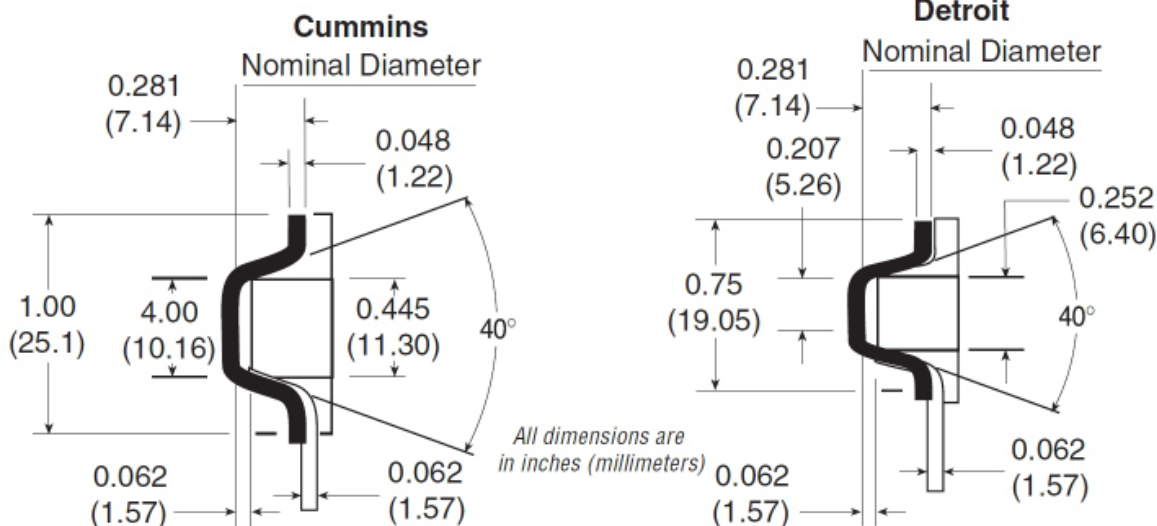
V-Clamps are currently available in over fifty different type and fastener configurations. Sizes range from .75 inch to 72 inch diameter. Many V-retainer profiles are already tooled; one may be suitable for your application.

RG RAY® General Purpose V-Insert Clamps

Part #	Band Width	Dia	Style	Ref
88-306	3/4" (19.0)	3" (76.2)	DETROIT	VT10382
7001005		3" (76.2)	AIRSEARCH	204010
88-316	3/4" (19.0)	3.88" (98.5)	CUMMINS	VT10388
88-356	3/4" (19.0)	3.5" (88.9)	DETROIT	VT10450-A
88-406	3/4" (19.0)	4" (101.6)	DETROIT	VT10481
88-475		4" (101.6)	DETROIT	VT10475
88-456	3/4" (19.0)	4.78" (121.4)	DETROIT	VT10525
88-506		5" (127.0)	CUMMINS	VT10588-1
88-576		5" (127.0)	DETROIT	VT10592



Dimensions



Torca TorcTite

The TorcTite offers a simple, effective way to connect exhaust system components. The pre-formed wideband exhaust clamp with step is designed for fast, easy and accurate installation. There is no need to separate pipes or exhaust members before clamping. (Torque Spec 60-80Nm)

- Compatible with pipes, flex, mufflers
- Durable installation without damage to pipe ends

Torca TorcTite Aluminised Lap (Reducing)

Part Number	Band Width	Size
7001129	2.95" (75.0)	2" (50.8)
7001130	2.95" (75.0)	2.25" (57.1)
7001131	2.95" (75.0)	2.50" (63.5)
7001132	2.95" (75.0)	2.75" (69.8)
7001133	2.95" (75.0)	3" (76.2)
7001134	2.95" (75.0)	3.50" (88.9)
7001135	2.95" (75.0)	4" (101.6)
7001667	2.95" (75.0)	4.50" (114.3)
7001136	2.95" (75.0)	5" (127.0)
7001137	2.95" (75.0)	6" (152.4)

Torca TorcTite Stainless Steel Lap (Reducing)

Part Number	Band Width	Size
7001129SS	2.95" (75.0)	2" (50.8)
7001130SS	2.95" (75.0)	2.25" (57.1)
7001131SS	2.95" (75.0)	2.50" (63.5)
7001132SS	2.95" (75.0)	2.75" (69.8)
7001133SS	2.95" (75.0)	3" (76.2)
7001134SS	2.95" (75.0)	3.50" (88.9)
7001135SS	2.95" (75.0)	4" (101.6)
7001667SS	2.95" (75.0)	4.50" (114.3)
7001136SS	2.95" (75.0)	5" (127.0)
7001137SS	2.95" (75.0)	6" (152.4)

Torca TorcTite Aluminised Butt (Flat)

Part Number	Band Width	Size
7001138	2.95" (75.0)	2" (50.8)
7001139	2.95" (75.0)	2.25" (57.1)
7001140	2.95" (75.0)	2.50" (63.5)
7001141	2.95" (75.0)	2.75" (69.8)
7001142	2.95" (75.0)	3" (76.2)
7001143	2.95" (75.0)	3.50" (88.9)
7001144	2.95" (75.0)	4" (101.6)
7001145	2.95" (75.0)	5" (127.0)
7001146	2.95" (75.0)	6" (152.4)



- 1 Exclusive reaction block
- 2 Pre-threaded nut bar provides tightening with only one assembly tool
- 3 High-strength plated fasteners
- 4 Materials: Aluminized steel and bright finish 304 stainless steel
- 5 Pre-formed band with step provides fast, accurate installation

Torque Spec 60-80Nm



7001314 HARDWARE KIT

Torca AccuSeal

The AccuSeal offers Torca's innovative reaction block technology to provide a full 360 degree equal distribution of stretching force, prohibiting pipe distortion while completing a unique seal around the joined exhaust components with high clamp load. The exhaust connections are serviceable and easy to disassemble.

- Features 44.5mm (1 3/4") band through 177.8mm (7")
- Provides joint serviceability
- Durable installation without damage to pipe ends
- Designed for part-in-assembly attachment
- Superior clamp load capability
- The reaction block provides a full 360° equal distribution of stretching force, prohibiting pipe distortion while completing a seal around the joined exhaust components



AccuSeal Aluminised

Part Number	Band Width	Size
7001860	1.25" (32.0)	1.75" (44.4)
7001862	1.25" (32.0)	2" (50.8)
7001861	1.25" (32.0)	2.25" (57.1)
7001867	1.25" (32.0)	2.50" (63.5)
7001868	1.25" (32.0)	2.75" (69.8)
7001863	1.25" (32.0)	3" (76.2)
7001869	1.25" (32.0)	3.50" (88.9)
7001864	1.25" (32.0)	4" (101.6)
7001870	1.25" (32.0)	4.50" (114.3)
7001865	1.25" (32.0)	5" (127.0)
7001866	1.25" (32.0)	6" (152.4)

- 1 High-strength fastener hardware with corrosion-resistant coating.
- 2 Easy to assemble, only one assembly torque point
- 3 Available in Aluminized Steel, 409 Stainless Steel, 430 Stainless Steel and 304 Stainless Steel

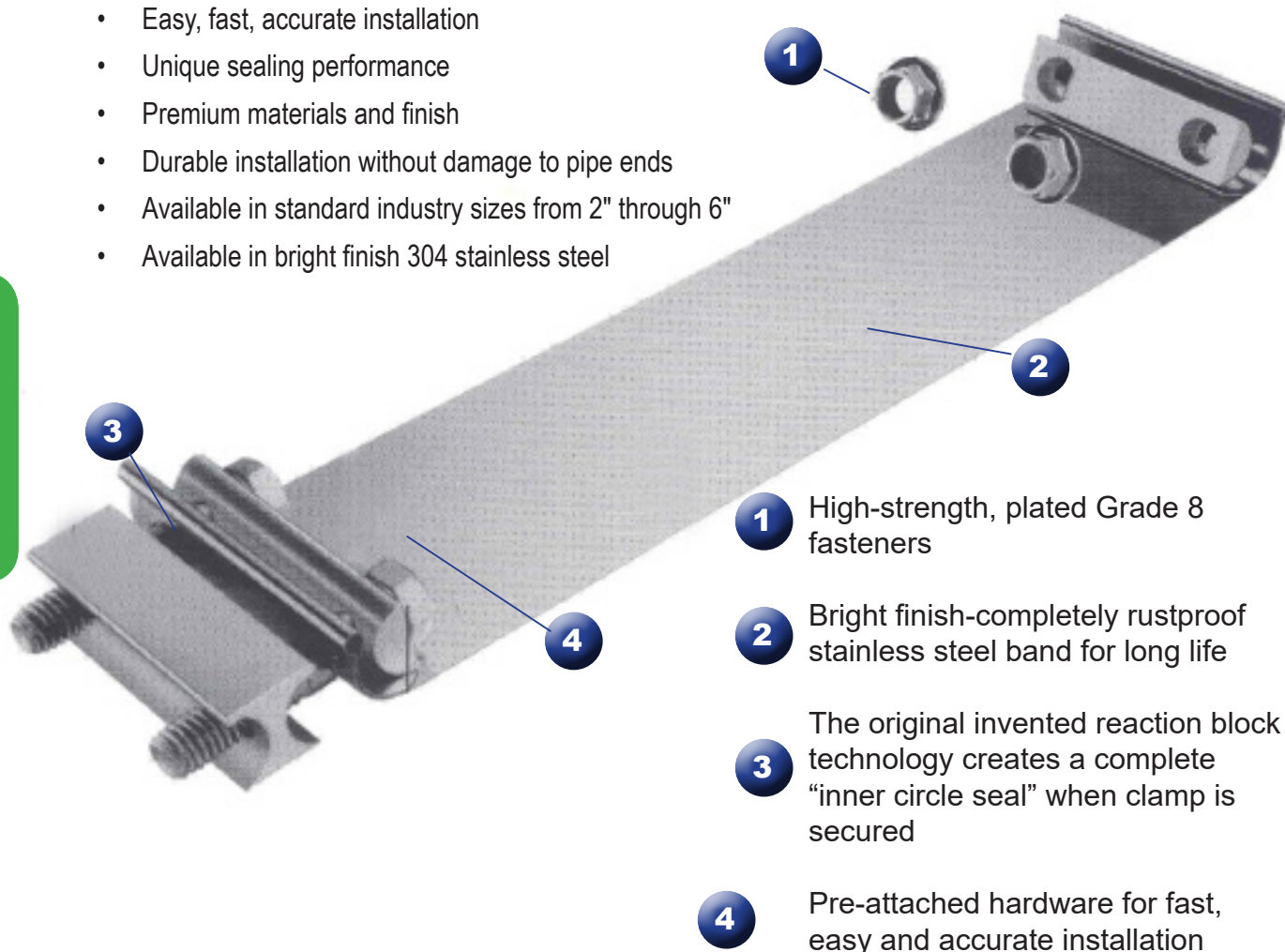
AccuSeal Stainless Steel

Part Number	Band Width	Size
7001862SS	1.25" (32.0)	2" (50.8)
7001760SS	1.25" (32.0)	6" (152.4)
7001765SS	1.25" (32.0)	5" (127.0)
7001987SS	1.25" (32.0)	7" (177.8)

Torca EasySeal

The EasySeal offers the best value in wideband exhaust clamps. Used for joining exhaust members of the same diameter. The unique design makes for fast, easy and accurate installation. There is no need to separate pipes or exhaust members before clamping.

- Ideal, service specific-design
- Flat, packaged, easy to store
- Easy, fast, accurate installation
- Unique sealing performance
- Premium materials and finish
- Durable installation without damage to pipe ends
- Available in standard industry sizes from 2" through 6"
- Available in bright finish 304 stainless steel



- 1 High-strength, plated Grade 8 fasteners
- 2 Bright finish-completely rustproof stainless steel band for long life
- 3 The original invented reaction block technology creates a complete "inner circle seal" when clamp is secured
- 4 Pre-attached hardware for fast, easy and accurate installation

Torca EasySeal		
Part Number	Band Width	Size
ES-25	3" (76.1)	2.50" (63.5)
ES-45	3" (76.1)	4.50" (114.3)
ES-500	3" (76.1)	5" (127.0)
ES-700	3" (76.1)	7" (177.8)
ES-800	3" (76.1)	8" (203.2)

TIECO H/Duty U Bolt Flat Band Exhaust Clamps

Zinc - Chrome - Stainless Steel

Clamp Size	Zinc Part #	Chrome Part #	S/Steel Part #
3" (76.2)	6-230ZNC	6-230CP	
3.5" (88.9)	6-235ZNC	6-235CP	
4" (101.6)	6-240ZNC	6-240CP	6-240SS
4.5" (114.3)	6-245ZNC	6-245CP	
5" (127.0)	6-250ZNC	6-250CP	6-250SS
6" (152.4)	6-260ZNC	6-260CP	6-260SS
7"	6-270ZNC	6-270CP	6-270SS
8"	6-280ZNC	6-280CP	6-280SS

NOTE:

ALL CLAMPS ABOVE ARE 4.5MM (5/16") OVER NOMINAL SIZE TO ALLOW FOR FITTMENT OVER EXPANDED TUBE

TIECO H/Duty Exhaust Round Clamps

Clamp Size	Zinc Part #
3" (76.2)	T330
3.5" (88.9)	T335

TIECO M/Duty Exhaust Round Clamps

Clamp Size	Zinc Part #
1.5"	6-112ZNC
1 5/8"	6-158ZNC
1 3/4"	6-134ZNC
1 7/8"	6-178ZNC
2"	6-200ZNC
2 3/8"	6-238ZNC
2 5/8"	6-258ZNC
4" (101.6)	7001008
5" (127.0)	7001009

TIECO Mild Steel Exhaust Round Clamps

Clamp Size	Zinc Part #
48MM	6-180UN
63MM	6-250UN

NOTE:

ALL CLAMPS ABOVE ARE 4.5MM (5/16") OVER NOMINAL SIZE TO ALLOW FOR FITTMENT OVER EXPANDED TUBE

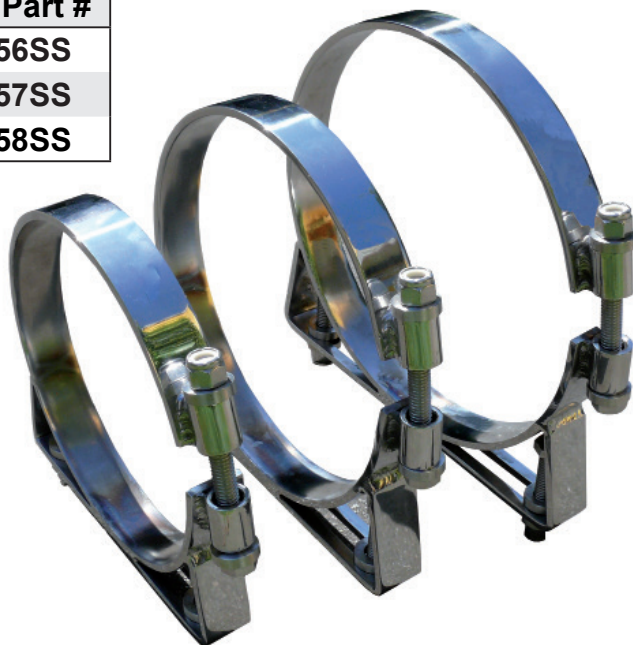


TIECO H/Duty Mounting Clamps

Chrome - Stainless Steel

Heavy Duty 5mm Thick 300 Series Band & Stainless Steel Hardware or Chrome Plated 5mm Carbon Steel.

Clamp Size	Chrome Part #	S/Steel Part #
6" (152.4)	7001856CP	7001856SS
7" (177.8)	7001857CP	7001857SS
8" (203.2)	7001858CP	7001858SS

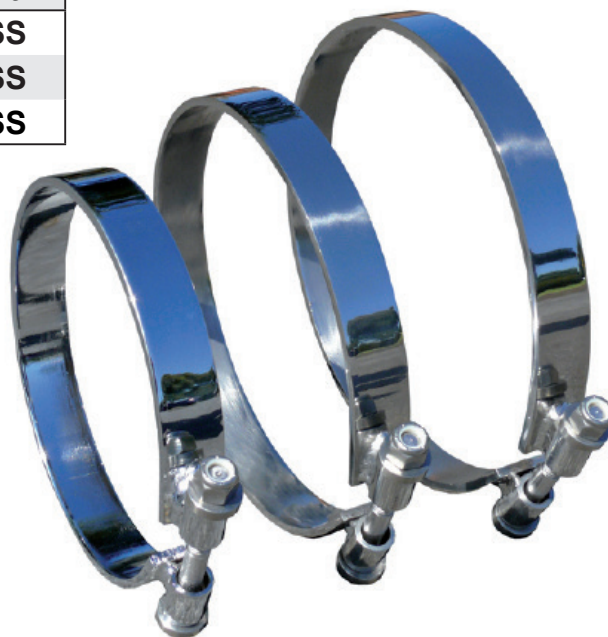


TIECO H/Duty Round Clamps

Chrome - Stainless Steel

Heavy Duty 5mm Thick 300 Series Band & Stainless Steel Hardware or Chrome Plated 5mm Carbon Steel.

Clamp Size	Chrome Part #	S/Steel Part #
6" (152.4)	7001816CP	7001816SS
7" (177.8)	7001817CP	7001817SS
8" (203.2)	7001818CP	7001818SS



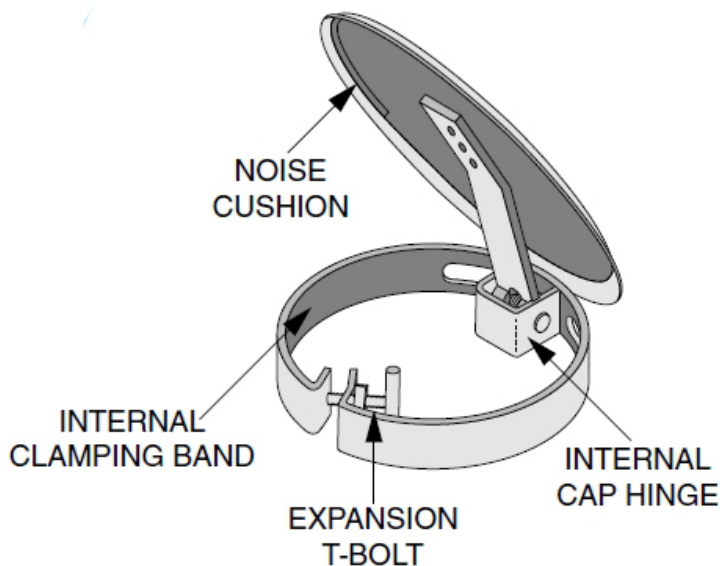
TIECO Rain caps

Tube Size	Zinc Part #	Chrome Part #	S/Steel Part #
1 ½" (31.8)	9-150	9-150CP	9-150SS
1 ¾" (44.45)	9-175		
2" (50.8)	7001188	7001188CP	
2 ¼" (57.15)	9-225		
2 ½" (63.5)	7001190		
3" (76.2)	7001191	7001191CP	
3 ½" (88.9)	7001183	7001183CP	
4" (101.6")	7001184	7001184CP	
4 ½" (114.3)	7001194	7001194CP	
5" (127.0)	7001185	7001185CP	
5 ½" (139.7)	7001192	7001192CP	
6" (152.4)	7001193	7001193CP	7001193SS
7" (177.8)	9-700	9-700CP	9-700SS
8" (203.2)	9-800	9-800CP	9-800SS



Tieco 45° Mitre Stack Rain Caps

Tube Size	S/Steel Part #
6" (152.4)	9M-600SS
7" (177.8)	9M-700SS



TIECO Steel - Stainless - Aluminium Tube



Tube Size	Mild Steel #	Aluminised #	Length	Stainless #	Aluminium #	Length
2" (50.8)	10-20		2.92m			
3" (76.2)	10-30	10-30AL	2.92m			
3 ½" (88.9)	10-35	10-35AL	2.92m			
4" (101.6")	10-40	10-40AL	2.92m	10-40SS		2.92m
4 ½" (114.3)	10-45		2.92m	10-45SS		2.92m
5" (127.0)	10-50	10-50AL	2.92m	10-50SS	27-050	2.92m
6" (152.4)	10-60	10-60AL	2.92m	10-60SS	27-060	2.92m
7" (177.8)	10-70	10-70AL	2.92m		27-070	2.92m
8" (203.2)	10-80		2.92m		27-080	2.92m
10" (254)	10-100		2.92m			

5

TIECO Stainless Steel Exhaust Flex

**MADE IN
AUSTRALIA**



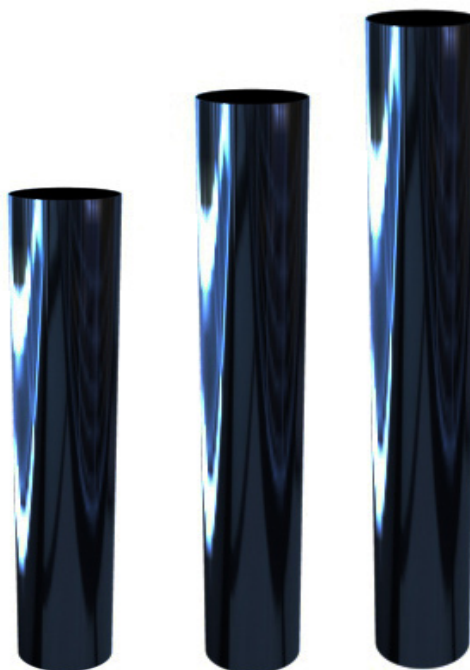
Tube Size	3M #	1M #	500MM #	18" #	24" #
1 ½"	7001358				
2" (50.8)	7001365				
2 ½" (63.5)	7001395	7002018			
3" (76.2)	7001361	7002019	7002020	7001246	7001248
3 ½" (88.9)	7001362			7001507	7001509
4" (101.6")	7001363	7002016		7001319	7001325
4 ½" (114.3)		7001321			
5" (127.0)	7001364	7002017		7001318	7001324
6" (152.4)	7001396	7002018			

TIECO Highly Polished Stainless 304 Tube

Tube Size	635mm #	914mm #	1M #
5" (127.0)			7001899-1M
6" (152.4)	7001769-635MM	7001769-914MM	7001769-1M



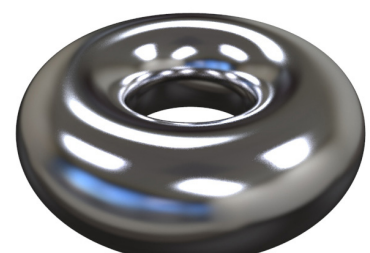
TIECO "TRAM"
MOUNTED ON
SS TUBE



TIECO Steel - Stainless - Aluminium Donuts

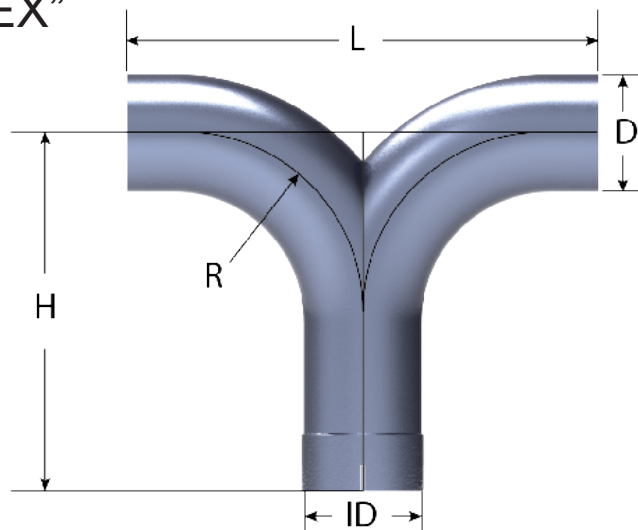
DONUT Size	Wall Thickness	CLR	Mild Steel #	Stainless #	Aluminium #
2" (50.8)	1.6	50.8	7001262		
2 ¼ (57.15)	1.6	57.15	7001161		
2 ½ (63.5)	1.6	63.5	7001260		
3" (76.2)	2.0	76.2	7001263		
3 ½" (88.9)	2.0	88.9	7001266		7001226AL
4" (101.6)	2.0	101.6	7001264	7001264SS	
4 ½" (114.3)				7001399	
5" (127.0)	2.0	127.0	7001265		7001911
6" (152.4)	2.0	152.4	7001536	7001265SS	7001783
7" (177.8)	2.0	177.8	7001873		7001784
8" (203.2)	2.0	203.2	7001658		

1/4 AND 1/2 SECTIONS AVAILABLE ON REQUEST



TIECO Steel Y Pieces "THERMEX"

Part #	ID	L	H	D	R
7001403	3"	344	229	76.6	127
7001406	3.5"	368	254	89.3	133
7001404	4"	406	305	102	156
7001405	5"	508	384	127.4	203
7001405<6	6"	508	384	127.4	203
7001405SR	5"	508	384	127.4	140
7001405SA	5"	508	373.5	127.4	203
7001656	6"	610	457	152.8	228.6



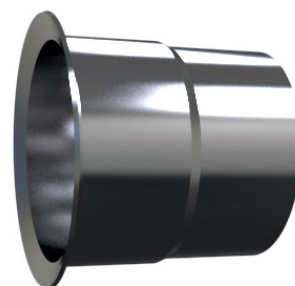
THERMEX PIPES ARE MADE FROM ALUMINISED TUBE.
EACH UNIT IS THEN PAINTED IN A HI-TEMP 600° AND
BAKED TO 240 DEGREES

TIECO Steel Y Pieces "Chrome"

Part #	ID	L	H	D	R
7001405CP	5"	508	384	127.4	203
7001405SRCP	5"	508	384	127.4	140

TIECO Steel Lip Flanges

Part #	ID	L	OD	Ref
88-300	3" (76.20)	80	76.2	Cummins (184456)
88-350	3.5" (88.9)	85	88.90	
88-415	4" (101.6)	95	101.6	
88-503	5" (127)	90	127.0	Cummins (186918)
88-603	6" (152.4)			
88-300PE	3" (76.2)	76		Plain End
88-350PE	3.5" (88.9)	76		Plain End
88-415PE	4" (101.6)	76		Plain End
88-503PE	5" (127)	76		Plain End

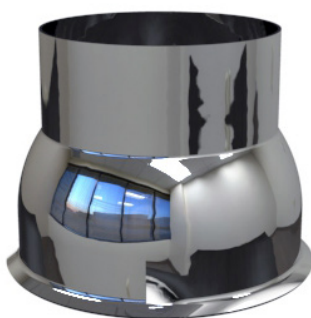


TIECO Tilt Cab Exhaust Connectors

Part #	Size	Type	Ref
7001221	5" (127)	Bell	Painted - Hi Temp Silver
7001221CP	5" (127)	Bell	Chrome Plated
7001332	5" (127)	Ball	Painted - Hi Temp Silver
7001127	5" (127)	Elbow	Painted - Hi Temp Silver
7001127CP	5" (127)	Elbow	Chrome Plated



7001332



7001221CP



7001127CP

TIECO EXHAUST Steel - Aluminised Double Couplers

Size	Length	Mild Steel #	Aluminised #
2" (50.8)	5"	DC2	
2 ½ (63.5)	5"	DC25	
3" (76.2)	5"	DC3	DC3AL
3 ½" (88.9)	5"	DC35	DC35AL
4" (101.6)	5"	DC4	DC4AL
5" (127.0)	5"	DC5	DC5AL
6" (152.4)	5"	DC6	DC6AL



TIECO EXHAUST Steel - Single Couplers

Size	Length	Mild Steel #	Aluminised #
2" (50.8)	5"	SC2	
2¼" (57.15)	5"	SC225	
2 ½ (63.5)	5"	SC25	
3" (76.2)	5"	SC3	SC3AL
3 ½" (88.9)	5"	SC35	SC35AL
4" (101.6)	5"	SC4	SC4AL
5" (127.0)	5"	SC5	SC5AL
6" (152.4)	5"	SC6	SC6AL



**MADE IN
AUSTRALIA**

TIECO EXHAUST Steel - Adaptors

Size 1	Size 2	Length	Mild Steel #	Aluminised #
2 ½	3"	5"	EXA253	EXA253AL
3"	3½"	5"	EXA335	EXA335AL
3"	4"	5"	EXA34	EXA34AL
4"	5"	5"	EXA45	EXA45AL
4 ½"	5"	5"	EXA455	EXA455AL
5"	5 ½"	5"	EXA555	EXA555AL
5"	6"	5"	EXA56	EXA56AL



TIECO EXHAUST MEGA Steel Adaptors (Imported)

Size 1	Size 2	Length	Mild Steel #
7" ID	5" OD	6"	EXA7ID5OD
7" ID	6" OD	6"	EXA7ID6OD
7" OD	5" OD	6"	EXA7OD5OD
7" OD	6" OD	6"	EXA7OD6OD
8" ID	5" OD	6"	EXA8ID5OD
8" ID	6" OD	6"	EXA8ID6OD
8" OD	5" OD	6"	EXA8OD5OD
8" OD	6" OD	6"	EXA8OD6OD



TIECO EXHAUST Steel Standard Radius 90° Bends

Size	Legs mm	CLE	CLR	Mild Steel #	Aluminised #
2" (50.8)		5"	3"	SL290	
2 1/4" (57.15)		6 1/4"	5 1/2"	SL22590	
2 1/2" (63.5)	235	9 1/4"	5 1/2"	SL2590	
3" (76.2)	240	9 1/2"	4 1/2"	SL390	SL390AL
3 1/2" (88.9)	275	11"	6"	SL3590	SL3590AL
4" (101.6)	355	14"	6"	SL490	SL490AL
4 1/2" (114.3)	400	14"	6"	SL4590	
5" (127.0)	455	18"	8"	SL590	SL590AL
6" (152.4)	360	14"	9"	SL690	SL690AL
7" (177.8)	411	16"	10 1/2"	SL790	



TIECO EXHAUST Steel Short Radius 90° Bends

Size	Legs mm	CLE	CLR	Mild Steel #	Aluminised #
3" (76.2)	76	3"	3"	SL390SR	SL390SRAL
3 1/2" (88.9)	165	6.5"	3.5"	SL3590SR	SL3590SRAL
4" (101.6)	152	6"	4"	SL490SR	SL490SRAL
5" (127.0)	204	8"	5.5"	SL590SR	SL590SRAL
6" (152.4)	230	10"	6"	SL690SR	SL690SRAL

TIECO EXHAUST Steel Standard Radius 45° Bends

Size	Legs mm	CLE	CLR	Mild Steel #	Aluminised #
2" (50.8)		4"	3"	SL245	
2 1/4" (57.15)		2 1/4"	5 1/2"	SL22545	
2 1/2" (63.5)	184	2 1/4"	5 1/2"	SL2545	
3" (76.2)	210	8 1/4"	4 1/2"	SL345	SL345AL
3 1/2" (88.9)	230	9"	6"	SL3545	SL3545AL
4" (101.6)	240	9 1/2"	6"	SL445	SL445AL
4 1/2" (114.3)	290	9 1/2"	6"	SL4545	
5" (127.0)	290	11 3/4"	8"	SL545	SL545AL
6" (152.4)	155	6"	9"	SL645	SL645AL
7" (177.8)	360	14"	10 1/2"	SL745	



TIECO EXHAUST Steel Short Radius 45° Bends

Size	Legs mm	CLE	CLR	Mild Steel #	Aluminised #
3" (76.2)	76	3"	3"	SL345SR	SL345SRAL
3 1/2" (88.9)	165	6.5"	3.5"	SL3545SR	SL3545SRAL
4" (101.6)	152	6"	4"	SL445SR	SL445SRAL
5" (127.0)	204	8"	5.5"	SL545SR	SL545SRAL
6" (152.4)	230	10"	6"	SL645SR	SL645SRAL

TIECO EXHAUST Steel Standard Radius 60° Bends

Size	Legs mm	CLE	CLR	Mild Steel #	Aluminised #
2" (50.8)		5"	3"	SL260	
2 ¼" (57.15)		6 ¼"	5 ½"	SL22560	
2 ½" (63.5)	235	9 ¼"	5 ½"	SL2560	
3" (76.2)	240	9 ½"	4 ½"	SL360	SL360AL
3 ½" (88.9)	275	11"	6"	SL3560	SL3560AL
4" (101.6)	355	14"	6"	SL460	SL460AL
4 ½" (114.3)	400	14"	6"	SL4560	
5" (127.0)	455	18"	8"	SL560	SL560AL
6" (152.4)	360	14"	9"	SL660	SL660AL
7" (177.8)	411	16"	9"	SL760	



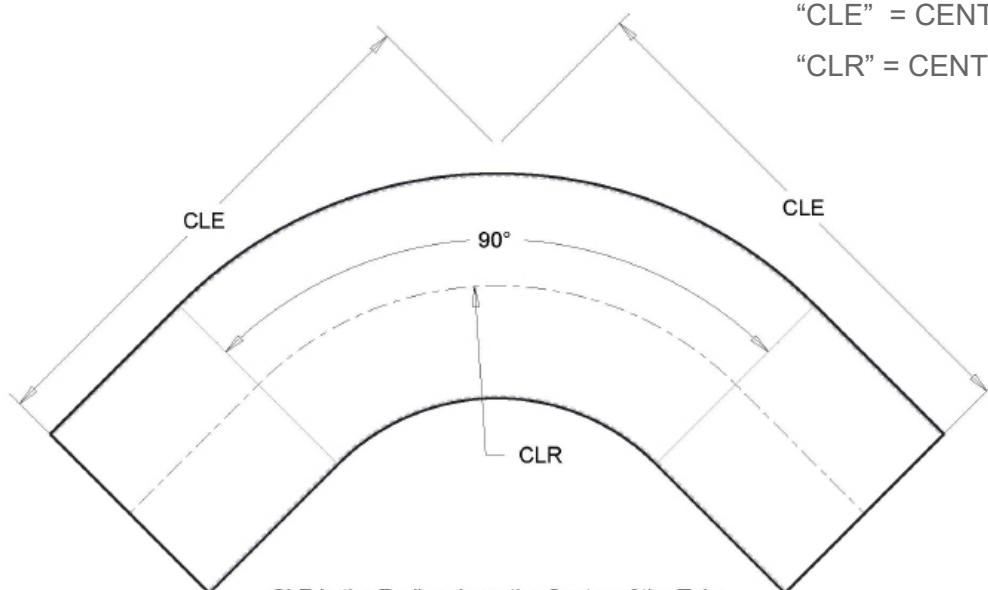
**MADE IN
AUSTRALIA**

TIECO EXHAUST Steel Standard Radius 30° Bends

Size	Legs mm	CLE	CLR	Mild Steel #	Aluminised #
2" (50.8)		4"	3"	SL230	
2 ¼" (57.15)		2 ¼"	5 ½"	SL22530	
2 ½" (63.5)	184	2 ¼"	5 ½"	SL2530	
3" (76.2)	210	8 ¼"	4 ½"	SL330	SL330AL
3 ½" (88.9)	230	9"	6"	SL3530	SL3530AL
4" (101.6)	240	9 ½"	6"	SL430	SL430AL
4 ½" (114.3)	290	9 ½"	6"	SL4530	
5" (127.0)	290	11 ¾"	8"	SL530	SL530AL
6" (152.4)	155	6"	9"	SL630	SL630AL
7" (177.8)	360	14"	14"	SL730	



5



"CLE" = CENTRE LINE OF RADIUS TO END

"CLR" = CENTRE LINE RADIUS

CLR is the Radius down the Centre of the Tube
CLE is the distance from centre to end of Bend

SALES DIRECT: 03 97 51 4949 sales@tieco.com.au

Ver: 50-01



Page 55

TIECO EXHAUST 45° & 90° Chrome Plated Bends

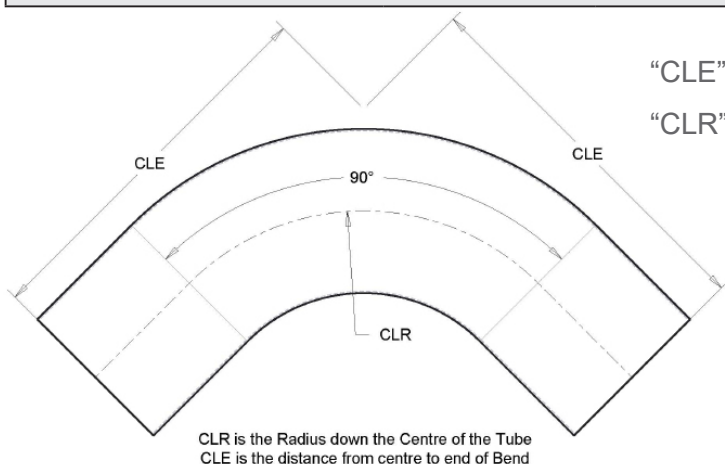


Standard Radius Chrome Plated Bends

Tieco Standard Radius 5" Chrome Bends			
Part #	Legs CLE mm	Legs CLE mm	CLR mm
SL545CP	290	290	204
SL590CP	304	304	204
SL590CP 18"X18"	455	455	204
SL590CP-12"X36"	304	914	204
SL590ENCP	304	304	204
SL590ENCP 12 X16	304	455	204
SL590ENCP18X18	455	455	204
SL590ENCP340X340	340	340	204

Short Radius Chrome Plated Bends

Tieco SHORT Radius 5" Chrome Bends			
Part #	Legs CLE mm	Legs CLE mm	CLR mm
SL590SRCP-340MM	340	340	139.7
SL590SRCP250-450	250	450	139.7
SL590SRCP490X650	490	650	139.7
SL590SRENCP-340	340	340	139.7
SL590SRENCP-430	430	430	139.7



"CLE" = CENTRE LINE OF RADIUS TO END

"CLR" = CENTRE LINE RADIUS

Tieco carry a large range of chrome plated bends in stock.

However we can quote on any of the listed bends in Chrome.

The part number will change to show "CP" at the rear of the Part Number.

Should you require a Chrome Bend that is not listed then please submit the request form located at the rear of this catalogue.



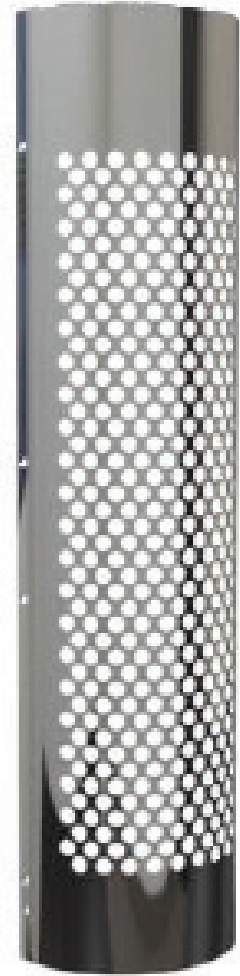
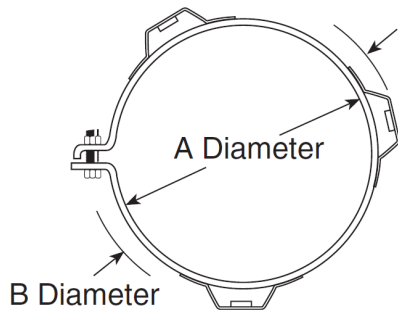
TIECO 180° Stainless Steel Muffler Guards

Part #	ID (A)	OD(B)	Suit	Guard Dia.
7001621	4"	8"	4" & 5" Pipe	8" D x 48" L
7001622	8"	12"	9" & 10" Mufflers	12" D x 48" L

Clamps to suit:

180° Stainless Steel Muffler Guards

Part #	ID (A)	OD(B)	Suit	Guard Dia.
7001623	4"	6"	7001621	8" D x 48" L
7001624	5"	7"	7001621	
7001646	6"	9"	7001622	
7001625	9"	11"	7001622	
7001626	10"	12"	7001622	12" D x 48" L



TIECO 180° Stainless Steel Muffler Guards W/- brackets attached

Part #	ID Dia	Suit	Guard Dia.
7002007	7"	7" Barrel	8.5" D x 48" L
7002008	8"	8" Barrel	9.0" D x 48" L
7002009	9"	9" Barrel	10.0" D x 48" L
7002010	10"	10" Barrel	11.5" D x 48" L



Polished Stainless Steel Guard & Clamps
(Muffler not included)

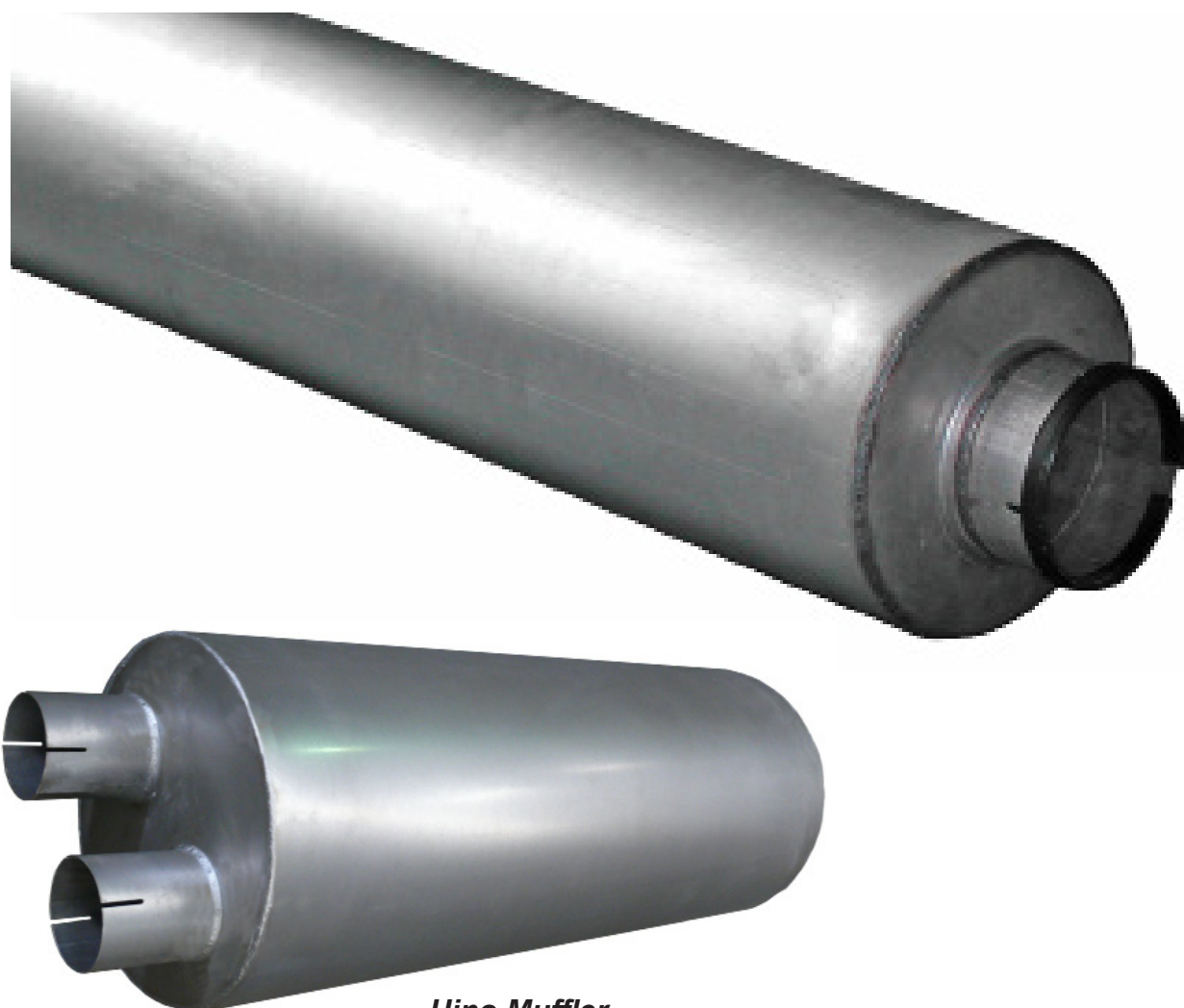


TIECO H/DutyTruck Mufflers

Heavy Duty Aluminised Steel Construction

Inlet	Outlet	Body Size		Style	Baffled	Free Flow	H/Duty 2mm
2 1/2"	2 1/2"	8"	30"	C/C	7001389		
3"	3"	8"	36"	C/C	7001390		
3"	3"	12"	29"	S/E	7001990	7001990S	
3 1/2"	3 1/2"	8"	36"	C/C	7001391		
3 1/2"	3 1/2"	9"	44"	C/C	7001370		
4"	4"	9"	44"	C/C	7001371		
4"	4"	10"	44"	C/C	7001373		
4"	5"	9"	44"	C/C		7001379S	
5"	5"	7"	44"	C/C	7001382		
5"	5"	10	30"	C/C		7001380S	
5"	5"	9"	44"	C/C	7001372	7001372S	
5"	5"	10"	44"	C/C	7001374	7001374S	7001374HD
5"	6"	10"	44"	C/C	7001376	7001376S	
5"	7"	10"	44"	C/C		7001378S	
6"	6"	10"	44"	C/C	7001377		

C/C = Centre / Centre S/E =Same End



Hino Muffler
7001990

TIECO Stainless Steel Mufflers w/- Polished Guards

Inlet	Outlet	Body Dia	Body Length	Part #	Guard Type	Guard Length
5"	5"	7"	44"	7001383	Full	51"
5"	6"	7"	44"	7001943	Full	51"
5"	7"	7"	44"	7001944	Full	51"
5"	6"	7"	44"	7001943LG	X-Long	57"
5"	7"	7"	44"	7001944LG	X-Long	57"

Highly Polished Sports Mufflers complete with polished Stainless Steel Guards.

Guards extend to full length of muffler. Extra Long Guard versions available to hide Stack Clamping.



TIECO Chrome Exhaust Stacks

- Straight
- Curved
- Mitre

Tieco Stacks are produced to exceed the Australian Standard for Chrome Plating.

First layers of Nickel for improved adhesion and corrosion resistance are added, followed by a controlled layer of chrome.

All stack length measurements are taken from top to bottom.



TIECO Custom Chrome Exhaust Stacks



At Tieco we offer a "Custom Stack" Service.

Should you have a requirement for something a little different then please visit : www.tieco.com.au and download one of our Stack Markup charts.

Once completed, just email or fax the document to our sales team for price & availability.

email: sales@tieco.com.au

fax: 03 9763 2577

What do Tieco Stack Numbers mean:

The following legend is used to determine the part number of all chrome stacks:

KEY:	MS -MITRE CUT STACK	EN -EXPANDED / NOTCHED
	CS -CURVED STACK	PE -PLAIN ENDED
	SS -STRAIGHT STACK	CP -CHROME PLATED
	AL -ALUMINISED STEEL	

EXAMPLE NUMBER **CS** **5** **60** **PE** **CP**
 Curved Stack 5" 60" Plain End Chrome Plated

DISCLAIMER

The products supplied by the Tieco Group ("Products") are manufactured according to strict specifications. However, given that some products or materials used in manufacture are imported or may become unavailable from time to time, then it may be necessary to substitute on occasions. In that event, Tieco Group will endeavour to make the changes seamlessly and in a manner that will not affect performance or appearance. However, this may not always be possible. The purchaser of the Products accepts that these changes or substitutions will occur from time to time and are beyond Tieco's control.



Outside Diameter	Overall Length	End Style		Outlet Style		
		Expanded	Plain	Deflector	Straight	45° Mitre
2.5"	24"	X		CS2524ENCP	SS2524ENCP	MS2524ENCP
	24"		X	CS2524PECP	SS2524PECP	MS2524PECP
	36"	X		CS2536ENCP	SS2536ENCP	MS2536ENCP
	36"		X	CS2536PECP	SS2536PECP	MS2536PECP
	48"	X		CS2548ENCP	SS2548ENCP	MS2548ENCP
	48"		X	CS2548PECP	SS2548PECP	MS2548PECP
	60"	X		CS2560ENCP	SS2560ENCP	MS2560ENCP
	60"		X	CS2560PECP	SS2560PECP	MS2560PECP
	72"	X		CS2572ENCP	SS2572ENCP	MS2572ENCP
	72"		X	CS2572PECP	SS2572PECP	MS2572PECP

Outside Diameter	Overall Length	End Style		Outlet Style		
		Expanded	Plain	Deflector	Straight	45° Mitre
3"	24"	X		CS324ENCP	SS324ENCP	MS324ENCP
	24"		X	CS324PECP	SS324PECP	MS324PECP
	36"	X		CS336ENCP	SS336ENCP	MS336ENCP
	36"		X	CS336PECP	SS336PECP	MS336PECP
	48"	X		CS348ENCP	SS348ENCP	MS348ENCP
	48"		X	CS348PECP	SS348PECP	MS348PECP
	60"	X		CS360ENCP	SS360ENCP	MS360ENCP
	60"		X	CS360PECP	SS360PECP	MS360PECP
	72"	X		CS372ENCP	SS372ENCP	MS372ENCP
	72"		X	CS372PECP	SS372PECP	MS372PECP

Outside Diameter	Overall Length	End Style		Outlet Style		
		Expanded	Plain	Deflector	Straight	45° Mitre
4"	24"	X		CS424ENCP	SS424ENCP	MS424ENCP
	24"		X	CS424PECP	SS424PECP	MS424PECP
	36"	X		CS436ENCP	SS436ENCP	MS436ENCP
	36"		X	CS436PECP	SS436PECP	MS436PECP
	48"	X		CS448ENCP	SS448ENCP	MS448ENCP
	48"		X	CS448PECP	SS448PECP	MS448PECP
	60"	X		CS460ENCP	SS460ENCP	MS460ENCP
	60"		X	CS460PECP	SS460PECP	MS460PECP
	72"	X		CS472ENCP	SS472ENCP	MS472ENCP
	72"		X	CS472PECP	SS472PECP	MS472PECP

**MADE IN
AUSTRALIA**

Outside Diameter	Overall Length	End Style		Outlet Style		
		Expanded	Plain	Deflector	Straight	45° Mitre
5"	24"	X		CS524ENCP	SS524ENCP	MS524ENCP
	24"		X	CS524PECP	SS524PECP	MS524PECP
	36"	X		CS536ENCP	SS536ENCP	MS536ENCP
	36"		X	CS536PECP	SS536PECP	MS536PECP
	48"	X		CS548ENCP	SS548ENCP	MS548ENCP
	48"		X	CS548PECP	SS548PECP	MS548PECP
	60"	X		CS560ENCP	SS560ENCP	MS560ENCP
	60"		X	CS560PECP	SS560PECP	MS560PECP
	72"	X		CS572ENCP	SS572ENCP	MS572ENCP
	72"		X	CS572PECP	SS572PECP	MS572PECP

Outside Diameter	Overall Length	End Style		Outlet Style		
		Expanded	Plain	Deflector	Straight	45° Mitre
6"	24"	X		CS624ENCP	SS624ENCP	MS624ENCP
	24"		X	CS624PECP	SS624PECP	MS624PECP
	36"	X		CS636ENCP	SS636ENCP	MS636ENCP
	36"		X	CS636PECP	SS636PECP	MS636PECP
	48"	X		CS648ENCP	SS648ENCP	MS648ENCP
	48"		X	CS648PECP	SS648PECP	MS648PECP
	60"	X		CS660ENCP	SS660ENCP	MS660ENCP
	60"		X	CS660PECP	SS660PECP	MS660PECP
	72"	X		CS672ENCP	SS672ENCP	MS672ENCP
	72"		X	CS672PECP	SS672PECP	MS672PECP

Outside Diameter	Overall Length	End Style		Outlet Style		
		Expanded	Plain	Deflector	Straight	45° Mitre
7"	24"	X		CS724ENCP	SS724ENCP	MS724ENCP
	24"		X	CS724PECP	SS724PECP	MS724PECP
	36"	X		CS736ENCP	SS736ENCP	MS736ENCP
	36"		X	CS736PECP	SS736PECP	MS736PECP
	48"	X		CS748ENCP	SS748ENCP	MS748ENCP
	48"		X	CS748PECP	SS748PECP	MS748PECP
	60"	X		CS760ENCP	SS760ENCP	MS760ENCP
	60"		X	CS760PECP	SS760PECP	MS760PECP
	72"	X		CS772ENCP	SS772ENCP	MS772ENCP
	72"		X	CS772PECP	SS772PECP	MS772PECP

Outside Diameter	Overall Length	End Style		Outlet Style		
		Expanded	Plain	Deflector	Straight	45° Mitre
8"	24"		X		SS824PECP	MS824PECP
	36"		X		SS836PECP	MS836PECP
	48"		X		SS848PECP	MS848PECP
	60"		X		SS860PECP	MS860PECP
	72"		X		SS872PECP	MS872PECP

TIECO Chrome Reducing Exhaust Stacks

Outside Diameter	Overall Length	Reducing End	Outlet Style		
			Deflector	Straight	45° Mitre
5"	24"	4"	CS524>4PECP	SS524>4PECP	MS548>4PECP
	36"	4"	CS536>4PECP	SS536>4PECP	MS536>4PECP
	48"	4"	CS548>4PECP	SS548>4PECP	MS548>4PECP
	60"	4"	CS560>4PECP	SS560>4PECP	MS560>4PECP
	72"	4"	CS572>4PECP	SS572>4PECP	MS572>4PECP

Outside Diameter	Overall Length	Reducing End	Outlet Style		
			Deflector	Straight	45° Mitre
6"	24"	5"	CS624>5PECP	SS624>5PECP	MS624>5PECP
	36"	5"	CS636>5PECP	SS636>5PECP	MS636>5PECP
	48"	5"	CS648>5PECP	SS648>5PECP	MS648>5PECP
	60"	5"	CS660>5PECP	SS660>5PECP	MS660>5PECP
	72"	5"	CS672>5PECP	SS672>5PECP	MS672>5PECP

Outside Diameter	Overall Length	Reducing End	Outlet Style		
			Deflector	Straight	45° Mitre
7"	24"	5"	CS724>5PECP	SS724>5PECP	MS724>5PECP
	36"	5"	CS736>5PECP	SS736>5PECP	MS736>5PECP
	48"	5"	CS748>5PECP	SS748>5PECP	MS748>5PECP
	60"	5"	CS760>5PECP	SS760>5PECP	MS760>5PECP
	72"	5"	CS772>5PECP	SS772>5PECP	MS772>5PECP

Outside Diameter	Overall Length	Reducing End	Outlet Style		
			Deflector	Straight	45° Mitre
8"	24"	5"		SS824>5PECP	MS824>5PECP
	36"	5"		SS836>5PECP	MS836>5PECP
	48"	5"		SS848>5PECP	MS848>5PECP
	60"	5"		SS860>5PECP	MS860>5PECP
	72"	5"		SS872>5PECP	MS872>5PECP

MADE IN AUSTRALIA

Warranty & Product Care

Our FULL range of Chrome Exhaust Stacks are warrantied for 12 months.

Warranty coverage begins on the date the product is purchased by the user.

Tieco recommends that Chrome Exhaust Stacks should be cleaned and polished regualy so as to maintain their appearance.

TIECO Chrome “VALUE” Exhaust Stacks (Imported)

- Straight
- Curved
- Mitre

Tieco “Value” Stacks offer great savings to both you and your customers.

Produced to our specifications overseas.

All stack length measurements are taken from top to bottom.



Outside Diameter	Overall Length	End Style		Outlet Style		
		Expanded	Plain	Deflector	Straight	45° Mitre
4"	24"	X		VCS424ENCP		
	36"	X			VSS436ENCP	
	36"		X	VCS436PECP	VSS436PECP	
	48"		X		VSS448PECP	
	72"		X		VSS472PECP	
5"	24"	X		VCS524ENCP		
	24"		X	VCS524PECP		
	36"	X		VCS536ENCP		
	36"		X	VCS536PECP	VSS536PECP	
	48"	X		VCS548ENCP	VSS548ENCP	
	48"		X	VCS548PECP	VSS548PECP	
	60"		X	VCS560PECP	VSS560PECP	
	72"	X		VCS572ENCP		
	72"		X	VCS572PECP	VSS572PECP	
6"	36"	X			VSS636ENCP	
	36"		X		VSS636PECP	
	48"	X				
	48"		X	VCS648PECP	VSS648PECP	
7"	72"	X			VSS772ENCP	MS772ENCP
	72"		X	VCS772PECP	VSS772PECP	MS772PECP

TIECO Chrome “VALUE” Reducing Exhaust Stacks (Imported)

Outside Diameter	Overall Length	Reducing End	Outlet Style		
			Deflector	Straight	45° Mitre
6"	24"	4"	VMS648>4PECP		
	24"	5"	VCS624>5PECP		
	36"	5"	VCS636>5PECP	VSS636>5PECP	
	48"	4"	VCS648>4PECP		
	48"	5"	VCS648>5PECP	VSS648>5PECP	VMS648>5PECP
	60"	5"	VCS660>5PECP		VMS660>5PECP
	72"	5"	VCS672>5PECP		
7"	24"	5"	VCS724>5PECP		
	36"	5"	VCS736>5PECP		VMS736>5PECP
	48"	5"	VCS748>5PECP	VSS748>5PECP	VMS748>5PECP
	48"	6"	VCS748>6PECP		
	60"	5"	VCS760>5PECP		VMS760>5PECP
	60"	6"	VCS760>6PECP		
	72"	5"	VCS772>5PECP	VSS772>5PECP	VMS772>5PECP

TIECO Custom Chrome Exhaust Stacks

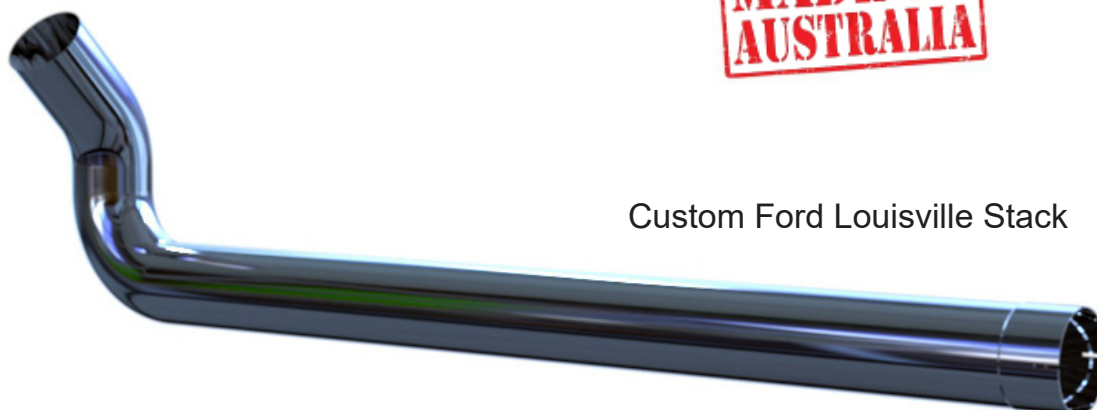
At Tieco we offer a “Custom Stack” Service.

Should you have a requirement for something a little different then please visit : www.tieco.com.au/downloads and download one of our Stack Markup charts.

Once completed, just email or fax the document to our sales team for a P&A.

email: sales@tieco.com.au

fax: 03 9763 2577



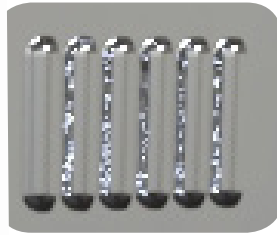
Custom Ford Louisville Stack

DISCLAIMER

The products supplied by the Tieco Group ("Products") are manufactured according to strict specifications. However, given that some products or materials used in manufacture are imported or may become unavailable from time to time, then it may be necessary to substitute on occasions. In that event, Tieco Group will endeavour to make the changes seamlessly and in a manner that will not affect performance or appearance. However, this may not always be possible. The purchaser of the Products accepts that these changes or substitutions will occur from time to time and are beyond Tieco's control.

TIECO T-RAM Stainless Air Intakes

Inlet Size	Part #
5" (127)	TR5000
6" (152.4)	TR6000
7" (177.8)	TR7000
8" (203.2)	TR8000



STYLISH WOVEN MESH GRILLE

VENTURI AIR SCAVENGER

- *RUST RESISTANT*
- *HIGH POLISHED FINISH*
- *ALL SEAMS SPOT WELDED*

Air Rams With Attitude!

8

TIECO S-RAM Low Profile Air Intakes



Inlet Size	Part #
4" (101.6)	SR4000
5" (127)	SR5000
6" (152.4)	SR6000
7" (177.8)	SR7000
8" (203.2)	SR8000

Our "**Low Profile**" Air Intake is manufactured in Chrome Plated ABS with a heavy duty aluminium grille then mounted on a highly polished 304 stainless steel base. Like the T-Ram this air intake also has an internal Rain Water extraction device.



TIECO Stainless Steel Air Cleaners



Body length	Part #
TALL TOP	7001011L
SHORT TOP	7001011S

15" Stainless Steel Air Cleaners complete
W/- Stainless steel mounting brackets and
straps 7" Outlet 34" Overall Length.
S Model 32" Overall Length
(Filter Sold Separately AF996M)

TIECO Stainless Steel Grab Handles

Overall Length	Tube 25mm Dia	Tube 31mm Dia
900mm	500GH25900	500GH31900
600mm	500GH25600	500GH31600
305mm	500GH25305	500GH31305
205mm	500GH25205	500GH31205



All measurements are centreline
Full Hardware kit supplied.

Since 1936 GROVER has been the standard for the trucking industry. Used by the major truck manufactures, our superior and unique sound have become synonymous with quality and durability.

Drivers of all types recognize the quality sound of our horns, on everything from earth movers to trains and boats you can find our products on the go.

Part #	Horn	Length	Flare	Stanchion	Sound Unit	Sound Unit Kit	Pedestal
SINGLE ORGANTONE HORNS				REPLACEMENT PARTS			
1024	Single	24 ½"	6"	1087	1093	1094	1720
1027	Single	21 ½"	6"	1087	1093	1094	1720
1054	Single	37 ½"	7 ¼"	1087	1093	1094	1735
1055	Single	34"	7 ¼"	1087	1093	1094	1735
TRAIN HORNS							
1275	Triple	17" - 15" - 11"	4"				
ROUND EMERGENCY HORNS							
1501	Single	21"	6"	1087	1517	1522	1720
1512	Single	21"	6"	1087	1517	1522	1720
SERIES 1600 DUAL TRUCKTONE HORNS							
1600	Dual	15 ¼"-13 ¼"	4"	(Black Sound Unit)		1607	1819
1601	Dual	15 ¼"-13 ¼"	4"			1607	1819
SERIES 1700 SINGLE TROMBONE HORN							
1700	Single	24 ½"	6"			1703	1681
1748	Single	21 ⅞"	6"			1703	1681
SERIES 20000 RECTANGULAR HORNS							
2000	Single	25 ¼"	4 ¼" x 6 ¾"			1703	1681
2001	Single	21 ⅞"	4 ¼" x 6 ¾"			1703	1681
RECTANGULAR EMERGENCY HORNS							
2040	Single	25 ¾"	4 ¼" x 6 ¾"				



1700 Series



2000 Series



1600



1601

GROVER EMERGENCY HORNS

Directional horns w/- machine gun series of blasts, motorists & pedestrians determine location of oncoming emergency vehicle, eliminating hazardous confusion.



1500 Series



2040 Series

GROVER TRAIN HORNS

These horns consume a large volume of air. On a truck installation be sure to use Min 3/8" Air Supply.



1275 Series

GROVER ACCESSORIES

Part #	Description	Suits
1630	Horn Valve (PVC)	All
1099	Gasket	
1103	Gasket	
1126	12V Solenoid Valve	
1207	Pressure Switch 80/100 psi	
1711	Clamp	1700
1715	Stanchion Gasket	1700
1725	Gasket Pedestal	
1727	Pedestal Liner Rubber	
1783	Pedestal Gasket 5 1/16" Hole	



HCRD4



700



850



7007194S



1630



HCRECT46

TIECO HORN ACCESSORIES

Part #	Description	Suits
HCRD4	Stainless Horn Shield suit 4" Flare	1600
700	Stainless Horn Shield suit 6" Flare	1501 - 1502 - 1700
850	Stainless Horn Shield suit 7.25" Flare	1054 - 1055
HCRECT46	Stainless Horn Shield suit Rectangular Horns	2000 - 2001 - 2040
7007194S	Installation Kit Single Horn	All
7007194D	Installation Kit Dual Horns	All
7001012	Pull Chain	1630

TIECO Air Horns & Accessories

Part #	Horn	Finish	Length	Flare	Pedestal
TIECO DUAL HORNS					
7001162	Dual	Black P/Coat	12" -10"	4"	
7001162-12/24V	Dual	Black P/Coat	12" -10"	4"	W/- Solenoid
7001163	Dual	Chrome	12" -10"	4"	
7001163-12/24V	Dual	Chrome	12" -10"	4"	W/- Solenoid
HORN SOLENOIDS					
7001181	12/24V Solenoid Valve				
7001499	24V Solenoid Valve for Extreme use on Emergency Vehicles.				



7001163 -12/24V



7001181

DECIBEL READING { 115 - 122 } ON 7001162 & 7001163



7001499



7001162 -12/24V

TIECO Ultrasonic Animal Alerts (Pair)

Part #
7001479

Warn wildlife from traffic day or night

- The Ultra Sonic Animal Alert minimizes collisions with wildlife,
- At speeds over 50 km/h the alert transmits a high frequency ultrasonic sound that alerts most wildlife of an oncoming vehicle
- There's no switches to turn on, and nothing is heard by the driver or pets inside the vehicle



ISSPRO Pyrometers

Pyrometers Head Size	Sweep	Temp Degrees	Head Only	Head with 6ft Kit	Head with 10ft Kit	Head with 14ft Kit
2"	100°	800° C	R605C	R605C-6	R605C-10	R605C-14
2"	250°	1000° C	R607C	R607C-6	R607C-10	R607C-14
2 3/4"	100°	1000° C	R602C	R602C-6	R602C-10	R602C-14
3"	100°	1000° C	R604IC	R604IC-6	R604IC-10	R604IC-14
3"	250°	1000° C	R606C	R606C-6	R606C-10	R606-14
3" Turbocator Pyro with Boost Gauge				R609C (Head Only)		



R607C



R604IC



R605C



R609C

ISSPRO Pyrometer Leads & Thermocouples



Thermocouple
R650



6ft Leadwire	10ft Leadwire	14ft Leadwire	16ft Leadwire	20ft Leadwire	30ft Leadwire
R660-6	R660-10	R660-14	R660-16	R660-20	R660-30

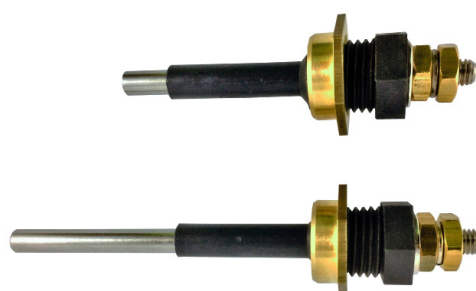
Weld Bush
1/4" N.P.T.
R680



Adjustable & High Temp
Versions available on request.

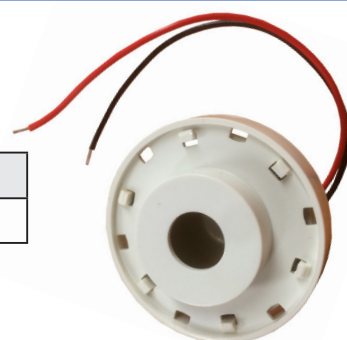
ISSPRO Coolant Senders

Sender	Probe Length	Part #
Coolant Probe Short	2"	R1220S
Coolant Probe Long	3"	R1220L



ISSPRO Piezo Alarms

Part #	Description	Voltage
R7074	Earitator 130 DBA	12 - 24 Volts



EARITATOR Audible Warnings

Part #	Description	Voltage
SAH	Earitator	5 - 35 Volts
7001056	Earitator w/- Variable Dial	5 - 35 Volts

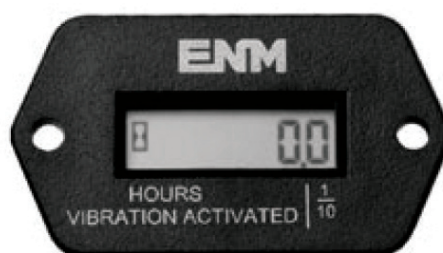


ENM

Counting Instruments

ENM Hourmeters

Gauge Type	Head	Part #
10V - 80V Hourmeter	2"	7001738
Vibration Activated Hourmeter (T56C1)		7001879



(T56C1) No Wiring required
it works on the vibrations
om the engine. 8 Year +
attery Life. Totally Sealed.
lade in USA

TIECO Truck Speed Limiter

Part #	Description
7001531	12v Universal Kit
7001532	24v Universal kit
7001500	Air Cylinder
7001497	Air Flow Valve
7001498	Solenoid 12 Volt
7001511	Control Box 12 & 24 Volt
7001521	Cylinder Air
7001516	Transducer



MURPHY Water Gauges

Part #	Lead Length	Temp Range	Bezel
20TI-250F-6FT	6ft (1.82m)	60°-120°C	Black
20TI-250F-8FT	8ft (2.43m)	60°-120°C	Black
20TI-250F-12FT	12ft (3.65m)	60°-120°C	Black
20TB-300F-16FT	16ft (4.87m)	60°-140°C	Black
20TI-250F-20FT	20ft (6.09m)	60°-120°C	Chrome
20TI-250F-25FT	25ft (7.62m)	60°-120°C	Chrome
7001259	Lamp Kit for gauges above		
20TI-NUT	Replacement Adapaptor Nut		

- Combination Indicating Gauge and Limit Switch
- Critical/High Temperature Limit Switch Is Visible and Adjustable
- Switch Can Activate Alarms and/or Shut Down Equipment
- Contact Grounds Through Case



20TI-NUT



7001259

MURPHY Air/Oil Pressure Gauges

Part #	PSI Range	Kpa Range	Bezel
20PI-100PSI	0-100 psi	0-700 kpa	Matt Black
20PI-150PSI	0-150 psi	0-1034 kpa	Matt Black
20PI-200PSI	0-200 psi	0-1379 kpa	Matt Black
7001259	Lamp Kit for gauges above		

- Combination Indicating Gauge and Limit Switch
- Critical Pressure Limit Switch Is Visible and Adjustable
- Switch Can Activate Alarms and/or Shutdown Equipment



MURPHY Fluid Level Gauge

Part #	Description
L150	Radiator Header Tank Gauge
EL150KI	As above W/- Micro Switch
BHF	Radiator Fitting Suit Above

The L150 series level gauge is a combination liquid level gauge and low limit switch; each unit includes a chamber with pivot float, an indicating dial with pointer, and a low level contact. Earthing via the case.

When properly installed and maintained, the float operates the pointer that, in turn, both indicates level during normal operating, and closes a switching circuit if the level falls to the low-limit set point. Earthing via the case.

The EL150K1 series level Switchgauge is a combination liquid level gauge and low level microswitch.

- **Illuminated Murphy Gauges are now only available in 12FT and 16FT for Water and 100PSI for Pressure.**



L150

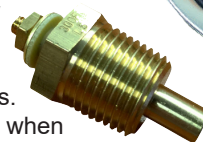


EL150KI

MURPHY ELECTRIC Water Temp Gauges

Part #	Lead	Temp Range	Bezel
EGS21T250-12	Wire	60°-120°C	Stainless
EST25012	12 volt Sender Unit		

The EG21T-250-12 Electric Temperature Gauge takes the electric gauge to new heights with proven state of the art technology and reliability. This rugged gauge is environmentally sealed and exceeds the rigid SAE J1810 standard for reliable operation under tough off-road and power unit environments. Soft, non-glare dial and pointer illumination is provided by a "cold light" LED and when powered the white lettering and clear pointer become soft red. The EG21T-250-12 features a spin-on gage clamp that will accommodate panel mounting up to 3/4" thick.



MURPHY ELECTRIC Air/Oil Pressure Gauges

Part #	PSI Range	Kpa Range	Bezel
EGS20PI00-12	0-100 psi	0-700 kpa	Brushed Silver
ESP100	12volt Sender Unit		

Stainless steel bezel resists corrosion. High impact polycarbonate lens is weather sealed. Through-dial lighting is easily read and has no distracting bright spots. The illuminated pointer is highly visible for sure reference readings. Strong polyester (PBT) case carries shock resistant air core movement. Spin-on gauge clamp accommodates panel mounting up to 3/4 in. (19 mm) thick. Plug-in wire connector for positive and easy connection. Switch set point adjustment on back side of the case



MURPHY Engine Control Solenoids

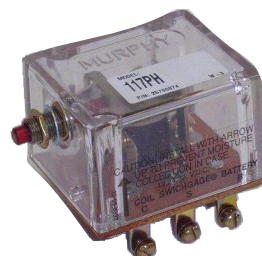
Part #	Description	Port Size
SV12	Solenoid Valve (12 Volt)	1/4" NPT
SV24	Solenoid Valve (24 Volt)	1/4" NPT

- Solenoid Operated Fuel Shutoff Valve
- Diesel Engines
- Diesel Driven Pumps and Compressors
- High Pressure Models
- Select from 12 or 24 VDC Models

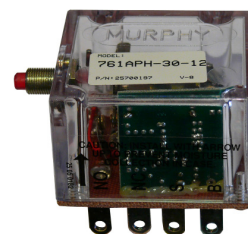


MURPHY Shutdown Relays

Part #	Description
117PH	Shutdown Relay
761APH-3012VNG	Shutdown Relay
518APH-12V	Shutdown Relay
518APH-24V	Shutdown Relay



117PH



761APH-3012VNG

Tattletale annunciators and magnetic switches are the nerve centres that translate Switchgauge contact operations into decisions and operate the alarm or shutdown device. They are the electrical load carrying devices for the alarm or shutdown device.

Tattletale annunciators indicate which monitored function failed leading to the alarm or shutdown whereas magnetic switches do not. Magnetic switches operate basically as a latching relay.



PACBRAKE Exhaust Brakes



A fixed orifice exhaust brake, is the most cost effective supplemental braking solution. The term "fixed orifice" refers to a hole in the butterfly valve, which allows a set amount of exhaust bypass at a pre-determined engine speed. It does not have any pressure regulation mechanism, which makes it an economical choice over a higher performance, pressure regulating exhaust brake, such as the PRXB.

Tieco International carry a wide range of Exhaust Brakes to suit both Cummins, Caterpillar Engines.

Call our Sales Team on 03 9757 4949 for a quotation.

PACBRAKE Exhaust Brake Accessories

Part #	Description
C11602	Replacement Air Cylinder
C10837	Exhaust Brake Lube 125 ml.
C11020	Remote Air Intake Kit
C11745	Brake Activation Pedal
C11931	Solenoid Activation Valve



C11745



C11602

C18037

PACBRAKE Solenoids & Micro Switches

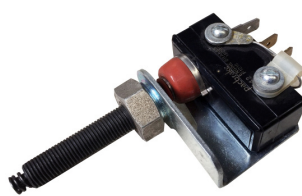
Part #	Jacobs	Description
P4205JB-12V	16440	Solenoid 12V
P4205JB-24V	16441	Solenoid 24V
P1218JB	001218	Micro Switch
P12261JB	012261	Micro Switch (Clutch)
P2733		In-Line Buffer Switch
P1495JB	001495	Micro Switch



Micro Switch #P12261JB



Soleinoid 12V #P4205JB-12V
Soleinoid 24V #P4205JB-24V



Micro Buffer Switch #P2733



Micro Switch #P1218JB



Micro Switch #P1495JB

PACBRAKE Onboard Air Compressors

Pacbrake's Heavy Duty HP625 air compressors have a 100% duty cycle and are offered in two pump head configurations, vertical and horizontal. These 3/4 horsepower compressors have an oil-less design, sealed bearings, a PTFE piston ring, a copper wire wound permanent magnet motor and a cast steel cylinder with a hard anodized aluminum sleeve.

FILL RATES - 2.5 Gal Tank

0-105 PSI 1 min

0-145 PSI 1.35 min

85-105 PSI 12 secs

110-145 PSI 29 secs

12 Volt DC Draws 45 amps

3.4 CFM 150PSI Max

H: 250 mm L: 290 mm

W: 130 mm Weight 7.5 KG



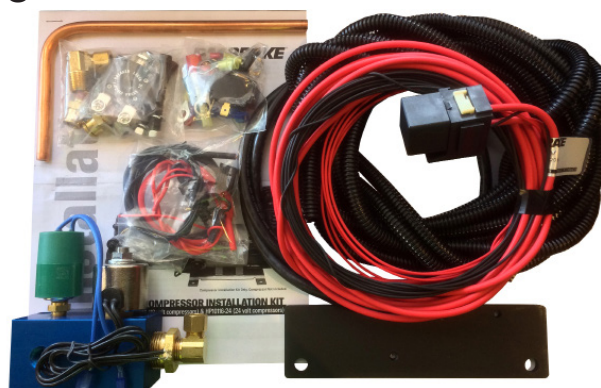
Orientation	12 Volts	24 Volts
Vertical	HP10625V	HP10625-24V
Horizontal	HP10625H	

11

PACBRAKE Compressor Fitting Kit

Installation kit for either 12-volt HP10625 AMP air compressors.

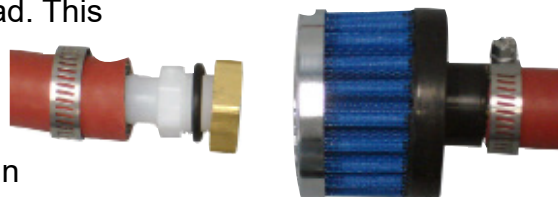
Kit comprises of Wiring, Relay, Switch, Overload reset switch, Terminals, Fuses, Mounting Bracket, Cooper Tube & Unloader Solenoid.



Part #
HP10116

PACBRAKE Remote Air Intake

Pacbrake's heavy duty HP625 compressors are designed with a cotton air intake filter located below the cylinder head. This type of filtration is acceptable when the compressor is mounted in an area free from moisture and subjected to minimal airborne debris. This remote air intake kit is designed for compressor installations in which the environment is subjected to the elements.



Part #
HP10115V

PACBRAKE Onboard Air Tanks

1.9 Litre Tank	9.5 Litre Tank	19 Litre Tank
HP10053	HP10050	HP10051



PACBRAKE POWERHALT PowerHalt PH2

PowerHalt, model PH2, emergency air intake shut-off valves provide a reliable and safe method of shutting down the engine. This particular model utilizes a butterfly valve design and a manual latching system with a spring loaded valve plate in the normally open (engine run) position. For closing the valve, the PH2 model offers a manual and/or solenoid actuation of this latching system. This particular model is best suited for non fail-safe applications, and covers a broad range of industry applications/requirements.



Protect your Equipment

Emergency air intake shut-off valves provide a reliable and safe method of shutting down the engine.

POWERHALT FEATURES

ELECTRIC, PNEUMATIC & MANUAL
ACTIVATION OPTIONS

12 VOLT & 24 VOLT ACTUATION

RESET KNOB

ANODIZED ALUMINUM & STAINLESS STEEL COMPONENTS
FOR CORROSION PROTECTION

BUTTERFLY STYLE

OFF THE SHELF & CUSTOM DESIGNS / SIZES AVAILABLE



Installation Kits Available



Call our Sales Team for more
information

SALES DIRECT: 03 97 57 4949 sales@tieco.com.au

Ver: 50-01

TIECO Convex Mirrors

Head Size	Type	Mounting	Style	Part #
3 3/4"	Round	Stick On		7001123
4" x 5 1/2"	Rectangular	Stick On		7001128
5"	Round	W/- S/Steel Hardware	Polished Back	7001200
7"	Round (Offset)	W/- S/Steel Hardware	Polished Back	7001407
8"	Round	W/- S/Steel Hardware	Polished Back	7001208
4 1/2" - 6"	Rectangular	W/- S/Steel Hardware	White Back	7001204
4 1/2" - 6"	Rectangular	W/- S/Steel Hardware	Polished Back	7001445



TIECO Euro Style Mirrors

Head Size	Type	Mounting	Part #
220mm x 170mm	Rectangular	19mm	7001887
385mm x 210mm	Rectangular	19mm	7001880



Ideal Replacement or additional spotter mirror. Very Strong construction. Easy fit. 220mm X 170mm



Upgrade to this Euro Style mirror. Easy fitment. Very Strong construction. 385mm X 210mm

TIECO Metal Blade 2 Speed Fans

Head Size	Type	Part #
12 Volt	6" Matt Black	7001212
24 Volt	6" Matt Black	7001224



TIECO Turn L.E.D. Mirrors

Head Size	Side Arrow Direction	12V Part #	24V Part #
8"	Left	7001216L	7001216R
8"	Right	7001216L-24	7001216R-24



*** 12 & 24 VOLT**

*** TURN LED'S**

TIECO Cab Roof Lamps

Lens Type	Lamp w/-Orange Lens	Lamp W/- Clear Lens	Orange Lens	Clear Lens
STANDARD GLOBE VERSION				
Front Half	9001388	9001510	9001408	9001481
Full	9001500	9001550		
LED VERSION				
Front Half	9001388LED	9001510LED	9001408LED	9001481LED
Front Half		9001510 CLA	*Amber leds w/-	Clear Lens

9001388



9001510



9001550



9001500



LED Conversion units
plug directly into current
globe socket eliminating
the need to remove
lights from roof.



SALES DIRECT: 03 97 57 4949 sales@tieco.com.au

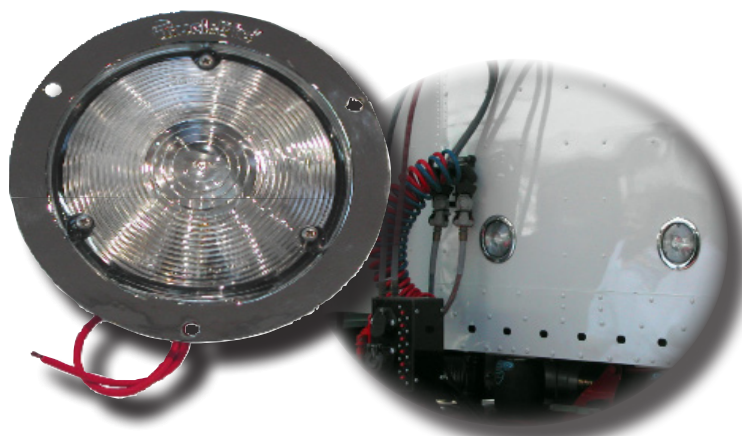
Ver: 50-01



Page 79

TIECO Hook Up Lights

Head Size	Type	Mounting	Part #
5"	Die Cast Chrome	Screw	7001759



TIECO Taps & Drain Valves

Part	Thread Size	Outlet	Ref:	Part #
Drain Cock	3/8"	3/8"	Cummins 177901	V404P-6-6
Drain Cock	3/8"	5/8"	Cummins 157098	V404P-10-6
Drain Valve W/- Cable	1/2"			7001582



TIECO Stemco Style Hub Caps

Part	Type	Ref:	Part #
Oil Hub Cap	Cast	343-4009	7001489
Polished Oil Hub Cap	Chrome	343-4009	7001489P
Chrome Oil Hub Cap	Polished	343-4009	7001489CP
Window Kit to Suit		359-5995	7001493



TIECO Chrome Hub Caps & Clips

Cap Size	Description	Part #
6"	Chrome Cap to suit Fruehauf Trailers	7001252
7 1/4"	Chrome Cap Front Axle	7001298
7 1/2"	Chrome Cap suit some Volvo's	7001475
7 5/8"	Chrome Cap suit some Volvo's	7001480
8"	Chrome Hub Cap	7001151
	Front Wheel Adaptor suit 8" Caps (7001151)	7001451
8"	Chrome Cap with 4 3/4" cut out for Hubo	7001458
8 1/8"	Chrome Cap to suit IH Rear Axles	7001228
8 1/2"	Chrome Hub Cap	7001619
8 5/8"	Chrome Cap w/- 4 Slots & clips suit Alcoa Wheels	7001491
9 1/4"	Moon Type Hub Cap	HB10
	R170 Clips	7001080



TIECO Nut Covers

Nut Size	Flared #	Straight #
1 1/16"		7001461
1 1/4"	7001457	70000125XSV
1 5/16"	7001401	7001282
1 1/2"		7001392
32mm	7000032XSV	
41mm	7001793	
Universal Nut Cover Pullers		7001794



7001461 XSV000125 7001282 7001392 7001457 7001401 XSV0032 7001793

TIECO Stainless Mudguard Pole Ends & Flaps

Part #	Description
7001021	Stainless Steel Pole Cover
7001015	24" x 6" Rubber Guard Flap



SALES DIRECT: 03 97 57 4949 sales@tieco.com.au

Ver: 50-01



Page 81

TIECO Multi Purpose Rubber Ties

All Rubber ties are UV and Ozone protected to prolong product life, and are made from a specially formulated rubber compound that can withstand constant stretching and recoil action whilst maintaining tension under load.

Safer than the traditional "Ocky" strap as there are no dangerous metal hooks.

The Dog Bone (Heavy Duty) and the Standard Multi Purpose Rubber Ties are great for tradespeople, campers, truck tarps, 4WD & boating enthusiasts and the home handyman.

We recommend stretching them no more than 30-50% of their length for best performance and to maximise life expectancy.



CROC STRAP 580MM

RTC10 Size: 580mm length

The 580mm Croc Strap is an adjustable rubber tie that can be used for tying down ladders, poles, PVC conduit and pipes on roof racks or for holding the ends of long lengths of pipe and conduit to make them easier to carry.

Perfect for permanently attaching to heavy duty electrical leads so they can be coiled up then tied for hanging. Croc Straps can be daisy chained together to make longer straps if required.

- No dangerous metal hooks
- Tie down PVC pipes & conduits
- Maintain tension under load
- UV protected to prolong product life
- Daisy chain for longer lengths
- Eliminate tangled electrical leads



DOGBONE 420MM

TTD420

Size: 420mm length with 50mm loops

Tarp Tie Dog Bone 420mm

- No dangerous metal hooks
- Maintain tension under load

DOGBONE 630MM

TTD630

Size: 630mm length with 50mm loops



**MADE IN
AUSTRALIA**

STANDARD 330MM

TTS330

Size: 330mm length and 12mm thick

Tarp Tie Standard 330mm

- No dangerous metal hooks
- Safer than the old 'Ocky Strap'
- Extendable rope can be tensioned
- Maintain tension under load
- UV protected to prolong product life



TIECO Self Fusing Silicone Tape

EMERGENCY REPAIRS TO:

PIPES

RADIATOR HOSES

ELECTICAL WIRE INSULATION



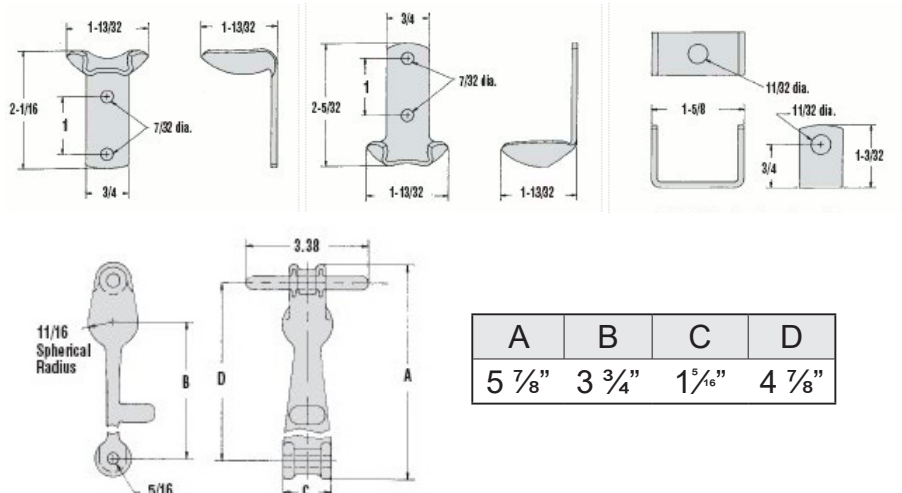
*Just wrap it around a troublesome leak and it will bond in seconds.
The tighter you stretch the tape, the quicker it will bond. **Brilliant!***

Resists fuels, oils, acids, solvents, salt water, road salt, UV rays

Part #	Length	Description
SFSTBLUE	3m	Self Fusing Silicone Tape
SFSTRED	3m	Self Fusing Silicone Tape
SFSTBLACK	3m	Self Fusing Silicone Tape

MISSION EPDM Hold Down Kits

Part #	Component	Bracket
7001125	Zinc	Standard
7001213	Zinc	Reverse
7001256	Chrome	Standard
7001126	Rubber Only	



SALES DIRECT: 03 97 57 4949 sales@tieco.com.au

Ver: 50-01



Page 83

1. Definitions

In these Terms:

"**ACL**" means the *Australian Consumer Law* contained in Schedule 2 of the *Competition and Consumer Act 2010* (Cth) and its associated Regulations as amended;

"**Agreement**" means any agreement for the provision of Goods or services by Tieco to the Customer;

"**consumer**" is as defined in the ACL and in determining if the Customer is a consumer, the determination is made if Customer is a consumer under the Agreement;

"**Customer**" means the person, jointly and severally if more than one, acquiring Goods or Services from Tieco;

"**Goods**" means goods supplied by Tieco to the Customer;

"**GST**" means the Goods and Services tax as defined in *A New Tax System (Goods and Services Tax) Act 1999* (Cth) and its associated Regulations as amended;

"**Tieco**" means Tieco Australia Pty Ltd (ABN 76 145 648 345) of 4 Tampe Rd Rowville Victoria 3178 Australia;

"**PPSA**" means the *Personal Property Securities Act 2009* (Cth) and its associated Regulations as amended;

"**Services**" means services supplied by Tieco to the Customer; and

"**Terms**" means these Terms and Conditions of Trade.

2. Basis of Agreement

2.1 Unless otherwise agreed by Tieco in writing, the ~~applies~~ applies exclusively to every Agreement and cannot be varied or replaced by any other terms, including the Customer's terms and conditions of purchase (if any).

2.2 Any quotation provided by Tieco to the Customer for the proposed supply of Goods or services is:

- (a) valid for 30 days unless otherwise agreed;
- (b) an invitation to treat only; and
- (c) only valid if in writing.

2.3 The Terms may include additional terms in Tieco's quotation, which are not inconsistent with the Terms.

2.4 An Agreement is accepted by Tieco when Tieco accepts, in writing or by electronic means, an offer from the Customer or provides the Customer with the Good or services.

2.5 Tieco has absolute discretion to refuse to accept any offer.

2.6 The Customer must provide Tieco with its specific requirements, if any, in relation to the Goods or Services.

2.7 Tieco may vary or amend these Terms by written notice to the Customer at any time. Any variations or amendments will apply to orders placed after the notice date.

3. Pricing

3.1 Prices quoted for the supply of Goods excludes GST and any other taxes or duties imposed on or in relation to the Goods.

3.2 If the Customer requests any variation to the Agreement, Tieco may increase the price to account for the variation.

3.3 Where there is any change in the costs incurred by Tieco in relation to Goods, Tieco may vary its price to take account of any such change, by notifying the Customer.

4. Payment

4.1 Unless otherwise agreed in writing:

- (a) Subject to 4.1(b), full payment for the must be made within 30 days of the date of Tieco's invoice.
- (b) Tieco reserves the right to require payment in full on delivery of the Goods.

4.2 Payment by cheque is not deemed made until the proceeds of the cheque have cleared.

4.3 Payment terms may be revoked or amended at Tieco's sole discretion immediately upon giving the Customer written notice.

4.4 The time for payment is of the essence.

5. Payment Default

5.1 If the Customer defaults in payment by the due date of any amount payable to Tieco, then all money which would become payable by the Customer to Tieco at a later date on any account, becomes immediately due and payable without the requirement of any notice to the Customer, and Tieco may, without prejudice to any of its other accrued or contingent right:

- (a) charge the Customer interest on any sum due at the prevailing rate pursuant to the *Penalty Interest Rates Act 1983* (Vic) plus 2 % for the period from the due date until the date of payment in full;
- (b) charge the Customer for, and the Customer must indemnify Tieco from, all costs and expenses (including without limitation all legal costs and expenses) incurred by it resulting from the default or in taking action to enforce compliance with the Agreement or to recover any Goods;
- (c) cease or suspend supply of any further Goods to the Customer;
- (d) by written notice to the Customer, terminate any uncompleted contract with the Customer.

5.2 Clauses 5.1(c) and 5.1(d) may also be relied upon, at Tieco's option:

- (a) where the Customer is a natural person and becomes bankrupt or enters into any scheme of arrangement or any assignment or composition with or for the benefit of his or her creditors or any class of his or her creditors generally; or
- (b) where the Customer is a corporation and, it enters into any scheme of arrangement or any assignment or composition with or for the benefit of its creditors or any class of its creditors generally, or has a liquidator, administrator, receiver or manager or similar functionary appointed in respect of its assets, or any action is taken for, or with the view to, the liquidation (including provisional liquidation), winding up or dissolution without winding up of the Customer.

6. Passing of Property

6.1 Until Tieco receives full payment in cleared funds for all Goods supplied by it to the Customer, as well as all other amounts owing to Tieco by the Customer:

- (a) title and property in all Goods remain vested in Tieco and does not pass to the Customer;
- (b) the Customer must hold the Goods as fiduciary bailee and agent for Tieco;
- (c) the Customer must keep the Goods separate from its Goods and maintain Tieco's labelling and packaging;
- (d) the Customer must hold the proceeds of sale of the Goods on trust for Tieco in a separate account with a bank to whom the Customer has not given security however failure to do so will not affect the Customer's obligation as trustee;
- (e) in addition to its rights under the PPSA, Tieco may without notice, enter any premises where it suspects the Goods are and remove them, notwithstanding that they may have been attached to other Goods not the property of Tieco, and for this purpose the Customer irrevocably licences Tieco to enter such premises and also indemnifies Tieco from and against all costs, claims, demands or actions by any party arising from such action.

7. Personal Property Securities Act

7.1 Notwithstanding anything to the contrary contained in these Terms, the PPSA applies to these Terms.

V-2400268:1



- 7.2 For the purposes of the PPSA:
- terms used in clause 7 that are defined in the PPSA have the same meaning as in the PPSA;
 - these Terms are a security agreement and Tieco has a Purchase Money Security Interest in all present and future Goods supplied by Tieco to the Customer and the proceeds of the Goods;
 - The security interest is a continuing interest irrespective of whether there are monies or obligations owing by the Customer at any particular time; and
 - the Customer must do whatever is necessary in order to give a valid security interest over the Goods which is able to be registered by Tieco on the Personal Property Securities Register.
- 7.3 The security interest arising under this clause 7 attaches to the Goods when the Goods are collected or dispatched from Tieco's premises and not at any later time.
- 7.4 Where permitted by the PPSA, the Customer waives any rights to receive the notifications, verifications, disclosures or other documentation specified under sections 95, 118, 121(4), 130, 132(3)(d), 132(4), 135 and 157 of the PPSA.
- 7.5 Tieco and the Customer agree to contract out of and nothing in the provisions of sections 96, 125, 129, 142 and 143 of the PPSA will apply to these Terms.
- 7.6 To the extent permitted by the PPSA, the Customer agrees that:
- the provisions of Chapter 4 of the PPSA which are for the benefit of the Customer or which place obligations on Tieco will apply only to the extent that they are mandatory or Tieco agrees to their application in writing; and
 - where Tieco has rights in addition to those in Chapter 4 of the PPSA, those rights will continue to apply.
- 7.7 The Customer must immediately upon Tieco's request:
- do all things and execute all documents necessary to give effect to the security interest created under this Agreement; and
 - procure from any person considered by Tieco to be relevant to its security position such agreements and waivers (including as equivalent to those above) as Tieco may at any time require.
- 7.8 Tieco may allocate amounts received from the Customer in any manner Tieco determines, including in any manner required to preserve any Purchase Money Security Interest it has in Goods supplied by Tieco.
- 7.9 For the purposes of section 275(6) of the PPSA, the parties agree and undertake that these Terms and any information pertaining to the sale of Goods and details of the Goods shall be kept confidential at all times. Neither party may disclose any information pertaining to these Terms or the sale of the Goods, except as otherwise required by law or that is already in the public domain.
- 8. Risk and Insurance**
- 8.1 The risk in the Goods and all insurance responsibility for theft, damage or otherwise will pass to the Customer immediately on the Goods being delivered to the Customer or taken from Tieco's premises by the Customer.
- 8.2 The Goods are sold to the Customer on the basis that the Customer has obtained all necessary licenses or permits under all relevant laws and regulations in relation to the Goods.
- 8.3 The Customer assumes all risk and liability for loss, damage or injury to persons or to property of the

Customer, or third parties arising out of the use or possession of any of the Goods sold by Tieco, unless recoverable from Tieco on the failure of any statutory guarantee under the ACL.

9. Performance of Agreement

- 9.1 Any period or date for delivery of Goods stated by Tieco is an estimate only and not a contractual commitment.
- 9.2 Tieco will use its reasonable endeavours to meet any estimated dates for delivery of the Goods but will not be liable for any loss or damage suffered by the Customer or any third party for failure to meet any estimated date.
- 10. Delivery**
- 10.1 Subject to clause 10.5, Tieco will arrange for the delivery of the Goods to the Customer.
- 10.2 Tieco may make part delivery of Goods and Tieco may invoice the Customer for the Goods provided.
- 10.3 The Customer indemnifies Tieco against any loss or damage suffered by Tieco, its sub-contractors or employees as a result of delivery, except where the Customer is a consumer and Tieco has not used due care and skill.
- 10.4 If delivery is attempted and is unable to be completed, the Customer is deemed to have taken delivery of the Goods. The Customer is liable for storage charges payable monthly on demand.
- 10.5 If agreed that the Customer will collect the Goods:
- the Customer must collect the Goods within 7 days of being advised they are ready;
 - if the Customer does not collect the Goods within this time, the Customer is deemed to have taken delivery of the Goods and is liable for storage charges payable monthly on demand; and
 - the Customer, unless agreed otherwise by Tieco, will responsible for all costs associated with the collection and transport of the Goods.

11. Warranty and Liability

- 11.1 Except as the Terms specifically state, or as contained in any express warranty provided in relation to the goods or services, the Agreement does not include by implication any other term, condition or warranty in respect of the quality, merchantability, acceptability, fitness for purpose, condition, description, assembly, manufacture, design or performance of the goods or services or any contractual remedy for their failure.
- 11.2 In any event a warranty does not apply to Goods:
- rendered defective as a result of accident, storage by the customer in an unsuitable environment or beyond the "use by date", negligent use, tampering, improper handling, use, operation, or storage, or due to any other causes outside of Tieco's control; or
 - that have been altered or modified in any way or for any reason without the written approval or instructions from Tieco.
- 11.3 If the Customer is a consumer nothing in these Terms restricts, limits or modifies the Customer's rights or remedies against Tieco for failure of a statutory guarantee under the ACL.
- 11.4 If the Customer on-supplies the Goods to a consumer and:
- the Goods are not of a kind ordinarily acquired for personal, domestic or household use or consumption, then the amount specified in section 276A(1) of the ACL is the absolute limit of Tieco's liability to the Customer;
 - the Goods are of a kind ordinarily acquired for personal, domestic or household use or

consumption, payment of any amount required under section 274 of the ACL is the absolute limit of Tieco's liability to the Customer;

howsoever arising under or in connection with the sale, installation, use of, storage or any other dealings with the Goods by the Customer or any third party.

11.5 If clause 11.3 or 11.4 do not apply, then other than as stated in the Terms or any written warranty statement Tieco is not liable to the Customer in any way arising under or in connection with the sale, use of, storage or any other dealings with the Goods by the Customer or any third party.

11.6 In any event, the maximum liability that Tieco will accept is the refund of the price of the Goods or the replacement of the Goods, at Tieco's sole discretion..

11.7 Tieco is not liable for any indirect or consequential losses or expenses suffered by the Customer or any third party, howsoever caused, including but not limited to loss of turnover, profits, business or goodwill or any liability to any other party, except to the extent of any liability imposed by the ACL.

11.8 The Customer acknowledges that:

- (a) it has not relied on any service involving skill and judgement, or on any advice, recommendation, information or assistance provided by Tieco in relation to the Goods or their use or application.
- (b) it has not made known, either expressly or by implication, to Tieco any purpose for which it requires the Goods and it has the sole responsibility of satisfying itself that the Goods are suitable for the use of the Customer.

11.9 Nothing in the Terms is to be interpreted as excluding, restricting or modifying or having the effect of excluding, restricting or modifying the application of any State or Federal legislation applicable to the sale of Goods which cannot be excluded, restricted or modified.

12. Cancellation

12.1 If Tieco is unable to deliver or provide the Goods, then it may cancel the Customer's order (even if it has been accepted) by written notice to the Customer.

12.2 No purported cancellation or suspension of an order or any part of it by the Customer is binding on Tieco once the order has been accepted.

13. Shortages and Exchanges

13.1 Subject to clause 13.2 and 13.5, Tieco will not be liable for any shortages, damage or non-compliance with the specifications in the Agreement unless the Customer notifies Tieco with full details and description within 10 days of delivery otherwise the Customer is deemed to have accepted the Goods.

13.2 When any shortages, claim for damaged Goods or non-compliance with the Agreement specifications is accepted by Tieco, Tieco may, at its option, replace the Goods, or refund the price of the Goods.

13.3 Subject to clause 13.4, Tieco will not under any circumstances accept Goods for return that:

- (a) have been specifically produced, imported or acquired to fulfil the Agreement;
- (b) are discontinued Goods or no longer stocked by Tieco;
- (c) have been altered in any way;
- (d) have been used or have been stored improperly or are out of "use by date"; or
- (e) are not in their original condition and packaging, if applicable.

13.4 If Goods are accepted for return by Tieco, the Customer will receive a credit for the returned Goods equal to the

price charged by Tieco less a 15% deduction for handling and restocking charges.

13.5 If the Customer is a consumer, nothing in this clause 13 limits any remedy available for a failure of the guarantees in sections 56 and 57 of the ACL.

14. Force Majeure

14.1 Tieco is not liable in any way howsoever arising under the Agreement to the extent that it is prevented from acting by events beyond its reasonable control including, without limitation, industrial disputes, strikes, lockouts, accident, breakdown, import or export restrictions, acts of God, acts or threats of terrorism or war. If an event of force majeure occurs, Tieco may suspend or terminate the Agreement by written notice to the Customer.

15. Miscellaneous

15.1 The law of Victoria from time to time governs the Terms. The parties agree to the non-exclusive jurisdiction of the courts of Victoria, the Federal Court of Australia, and of courts entitled to hear appeals from those Courts.

15.2 Notwithstanding clause 15.1, Tieco may elect to bring legal proceedings, including seeking injunctive relief, in any appropriate jurisdiction of its choosing.

15.3 Tieco's failure to enforce any of these Terms shall not be construed as a waiver of any of Tieco's rights.

15.4 If a clause is unenforceable it must be read down to be enforceable or, if it cannot be read down, the term must be severed from the Terms, without affecting the enforceability of the remaining terms.

15.5 A notice must be in writing and handed personally or sent by email, facsimile or prepaid mail to the last known address of the addressee. Notices sent by pre-paid post are deemed to be received upon posting. Notices sent by facsimile or email are deemed received on confirmation of successful transmission.



DISCLAIMER

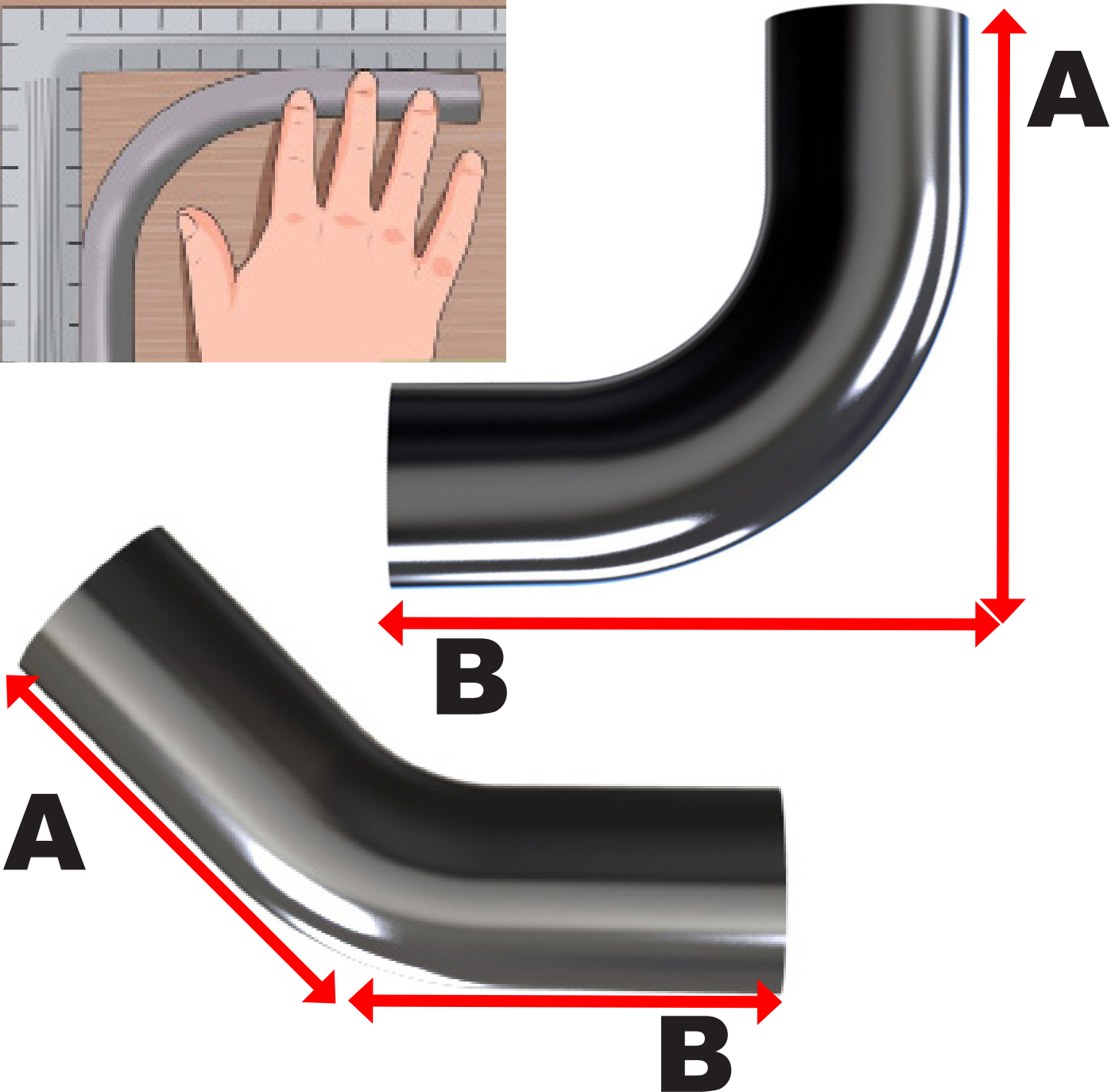
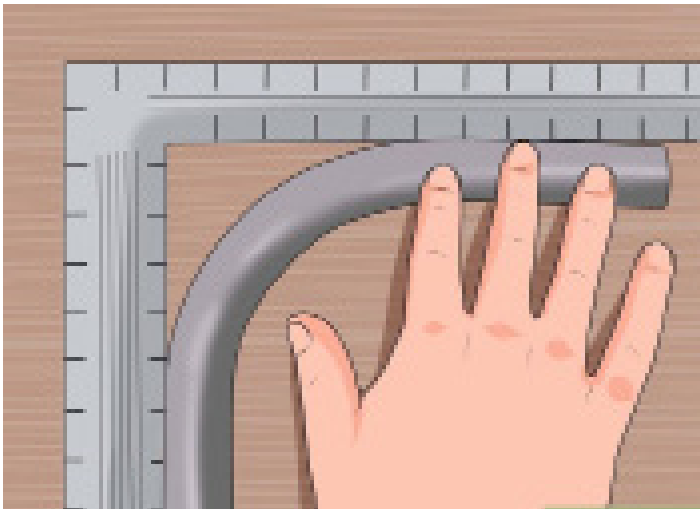
The products supplied by the Tieco Group ("Products") are manufactured according to strict specifications. However, given that some products or materials used in manufacture are imported or may become unavailable from time to time, then it may be necessary to substitute on occasions. In that event, Tieco Group will endeavour to make the changes seamlessly and in a manner that will not affect performance or appearance. However, this may not always be possible. The purchaser of the Products accepts that these changes or substitutions will occur from time to time and are beyond Tieco's control.



Tieco Exhaust Bend Mark Up Drawing

For Custom Bends, please fill out the table below and email to sales@tieco.com.au or fax to 03 9763 2577

Outer Pipe Dia.	2"		2.5"		3"		3.5"		4"		4.5"		5"		6"		7"	
Material	Mild Steel				Aluminised													
Angle Degree	45				90				Other:									
Radius of Bend	Short Radius				Std. Radius													
Length A																		
Length B																		
End A	Plain			Expanded				Expanded & Notched										
End B	Plain			Expanded				Expanded & Notched										
Finish	Plain			Oiled				Chrome										



Tieco Exhaust Stack Request Form

For Exhaust Stacks, please fill out the table below and email to sales@tieco.com.au or fax to 03 9763 2577

Outer Pipe Dia.	3"		3.5"		4"		4.5"		5"		6"		7"		8"	
Material	Mild Steel				Aluminised											
Stack Top Style	Deflector				Mitre				Straight		Bullhorn		US			
Radius of Bend	Short Radius				Std. Radius											
Overall Length					TIECO STACKS ARE MEASURED FROM THE TIP TO THE BOTTOM											
Stack Bottom	Straight				Reduced size				4"		5"		6"		7"	
Stack Bottom	Plain				Expanded				Expanded & Notched							
Finish	Plain				Oiled				Chrome							

** 8" Stacks are only available in Straight or Chino Styles*

TOP STYLES



DEFLECTOR



45° MITRE
28° by Request



STRAIGHT



US



BULLHORN



CHINO

BOTTOM STYLES



EXPANDED & NOTCHED



REDUCED



PLAIN END

NOTES:

Company Name: _____

Contact: _____

Tel: _____

Email: _____

Quantity Required: _____

Required Completion Date: / /



Est: 1967



Tieco International (Aust) Pty. Ltd

4 Tame Road Rowville Victoria 3178 Australia

t: +61 3 9757 4900 f: +61 3 9763 2577 e: sales@tieco.com.au

www.tieco.com.au

MANUFACTURING

Chrome Exhaust Stacks
2" to 8" - Mild - Stainless - Deflector

Mandrel Bends

Mild, Stainless, Aluminium

Custom Air Intakes

Aluminium - Mild - Stainless

Murphy

Heavy Duty Truck - Car - Bus

Exhaust Adaptors

2" to 8" Mild - Stainless

CMM Measuring

Specialist custom measuring Equipment

Mig & Tig Welding

Specialist Welding Cells

Paint Booth

Hi Temp Paint

Bake Oven

Hi Temp Bake Oven

CAD & Design

Specialist Engineering Services

DISTRIBUTORS FOR

Purosil

Silicone Hose - Automotive - Marine

Mission Rubber

EPDM Intake Rubber

Grover

Air Horns

Murphy

Gauges

Packrake

Exhaust Bends - Engine Studs etc

ENM

Alarms & Hour Meters

Isspro

Gauges & Senders

Torca

Exhaust Clamps

Breeze

Clamps

RG Ray

V Band Clamps

